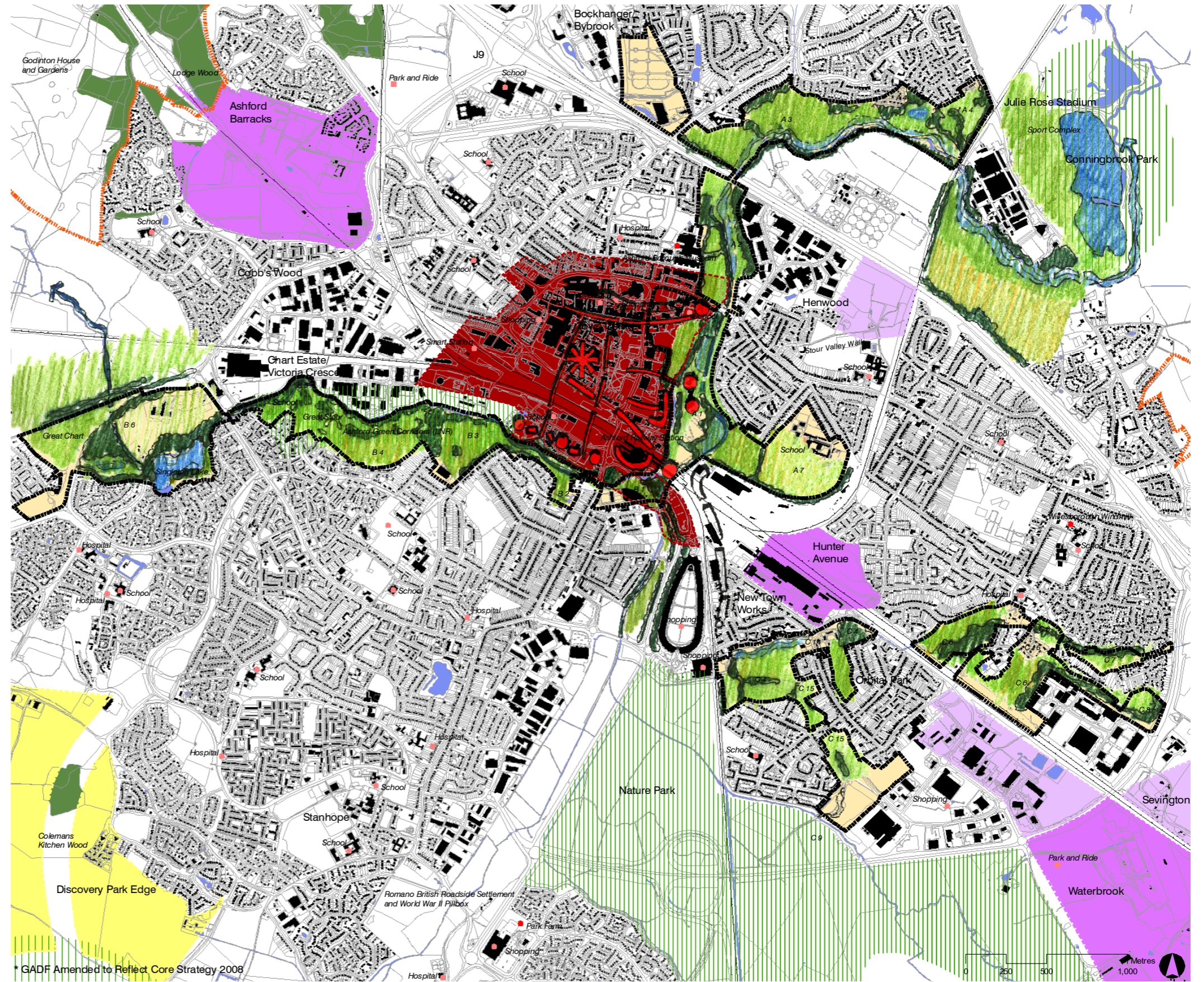


-  Component Area with Detail Units
-  Enhanced Cultural and Architectural Connections
-  Ancient Woodland
-  Watercourses and Waterbodies
-  Urban Area
-  Town Centre Regeneration Area
-  Primarily Employment Development Area
-  Primarily Residential Development Areas
-  Mixed Use Development Areas
-  Main Urban Extension area (CS5)
-  Possible Direction of Post 2021 Urban Extension
-  Strategic Parks (Core Strategy 2008)
-  Primary Parks (Original GADF Document)
-  Visual Envelope (approximate)
-  1.2 km Extent from Ashford (based on GADF development)



3.3.6 The sketch vision for the Ashford Town Centre Component (Map 36f)

The sketch vision is an indicative plan which suggests how the area could be transformed by the implementation of the Green & Blue Grid Principles.

* GADF Amended to Reflect Core Strategy 2008

Map 36f - Ashford Town Centre - Green & Blue Grid Sketch Vision