

June/July 2006

# Ashford

VOICE

## here comes summer

8 page pull-out of things  
to see and do this summer!

### Water

Do we have enough  
to go around?

### inside:

- A Safer Ashford
- Kent Air Ambulance
- Sport in the area
- Competition



ASHFORD  
BOROUGH COUNCIL



# chartfields

hedgers way, off coulter rd,  
kingsnorth, ashford

**3 and 4 bedroom homes from  
£210,000 to £290,000**

Open 7 days a week 10.30am - 5.00pm

**01233 642461**  
**www.wardhomes.co.uk**

Ward Homes are part of the Wilson  
Bowden Group of companies which  
includes David Wilson Homes.



Pictured is an interior photograph from Chartfields

  
**WARD**  
HOMES



**ASHFORD**  
BOROUGH COUNCIL

**www.ashford.gov.uk**

## council contacts

### Civic Centre

Tannery Lane, Ashford, Kent TN23 1PL

Open: 9am – 5pm Monday to Thursday  
9am – 4.30pm Friday

Tel: 01233 331111  
Minicom: 01233 330744  
Fax: 01233 645654

Lines Open:  
8.30am-5.30pm Monday to Thursday  
8.30am-5.30pm Friday

Out of Hours/Emergency: 01233 629911

24 Hour Payment Line: 01233 330625

Benefit Fraud Hotline: 0800 0262456

### Tenterden Office

6/7 The Fairings,  
Tenterden, Kent TN30 6QX

Open: 9am-5pm Monday to Thursday  
9am-4.30pm Friday  
(Closed for Lunch 1pm – 2pm)

Tel: 01580 764066

### The Ashford Gateway Centre

14 Park Mall, Ashford, Kent TN24 8RY

Tel: 08458 247247  
Minicom: 08458 247905  
Fax: 01233 638012

### Ashford Voice

Ashford Borough Council, Civic Centre,  
Tannery Lane, Ashford, Kent, TN23 1PL  
**voice@ashford.gov.uk**

Front cover photograph by Ady Kerry

Ashford Voice is printed on paper made  
from managed sustainable sources

# here comes the sun!



Welcome to your new look bi-monthly Ashford Voice, full of information from across the Borough on things you want to know about from the arts, sport and leisure to environmental issues, business advice and community news.

In this edition learn how agencies are working together to ensure water supply meets demand as Ashford grows; read about Ashford's top performing police and fire teams and enjoy the first in a series of features on the Kent Air Ambulance.

Summer's here and school holidays are on the way so we've packed plenty of things for all the family to see and do into a special eight-page Summer Sights Summer Sounds section.

We are always happy to hear from groups with a story to tell – whether it's a sports club, youth organisation, local charity or business. You can also let us know about any events you may be holding this year, and we'll do our best to include them in the What's On section.

We want to make sure we are producing a magazine you want to pick up and read and you can help us by completing the Reader's Survey. All completed forms will

be entered into a prize draw with a chance of winning £50 for you and £50 for your favourite local charity).



**Caroline Owen**  
Editor

## contents

### ashfordnews

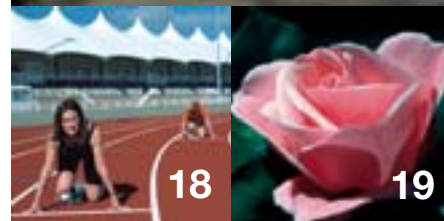
- 4 Water, water everywhere?** Will Ashford's growth add pressure on this precious resource?
- 6 Safe in their Hands** Making Ashford a safer place to live and work
- 8 Kent's Air Ambulance** Chief Executive David Philpott introduces the life saving helicopter service
- 22 Community Safety Unit** Up to the minute news on the issues that concern your community

### ashfordliving

- 9 Summer Sights/Summer Sounds** 8 pages of sizzling summer entertainment that's happening throughout June and July
- 12 What's On** Things to see and do at a glance
- 18 Sporting News** All the sporting news from around the area
- 19 Gardening** A busy time in the garden!
- 20 Sudoku** Win £100 in our puzzle competition!

### ashfordbusiness

- 17 Romney Enterprise Gateway**  
**Chamber of Commerce**



Your new look Ashford Voice has been designed and produced by Lightwave Design, Ashford

Tel: 01233 504910 [www.lightwavedesign.co.uk](http://www.lightwavedesign.co.uk)

Printed by: Headley Brothers Ltd, Ashford

Tel: 01233 623131 [www.headley.co.uk](http://www.headley.co.uk)

# water, water... everywhere?

As the South East experiences one of the driest periods in a century many people are worried Ashford's planned growth will add pressure on this precious resource.

But rest assured agencies are working together to ensure water supply meets demand as Ashford grows and are confident for the future.

Environment Agency work is well under way to ensure the development of Ashford does not harm the River Stour and its ecology. A detailed study commissioned by Ashford's Future team looking at water supply, waste water treatment, down stream water quality and flood risk was completed last Autumn.

Government money has been secured to fund several recommendations from the study including a scheme to use trees as part of wastewater treatment improving the quality of water discharged into the Stour. It will also generate a renewable fuel for heating homes and businesses.

Plans will also be developed for sustainable drainage systems that will help reduce flood risk and pollution.

Howard Davidson, Environment Agency Southern Regional Director said: *"Water is critical to a thriving sustainable community. We are delighted to be part of this work to look after the environment now and for future generations."*

## Water Supply and Waste Water Treatment

Mid Kent Water is investing £1.5 million a month to maintain supply and quality and work has already begun on a new £20million strategic main from Bewl Water to Ashford.

In September the company publishes a business strategy containing a 25-year resource plan which will directly address Ashford's growth and ensure careful environmental management.

Mid Kent Water's Asset Director Paul Seeley said: *"The key to our plan is to meet new challenges but maintain service levels to customers – we are confident that we will maintain reliable water supplies, regardless of housing growth."*

*"The growth of Ashford presents a significant challenge but it is also a tremendous opportunity to ensure new development will be truly sustainable."*

Southern Water has fast-tracked schemes to increase supply, employed extra staff to detect and fix leak and made a formal planning application for a £40million project which includes expansion of the sludge recycling centre at Ashford's wastewater treatment works.



## Working Together

Further improvements in water efficiency will play a key role for the future. Ashford Borough Council, Mid Kent Water and the Environment Agency are working together to improve water efficiency in new homes and planners are thinking ahead with new planning guidance.

Mid Kent Water has teamed up with Hillreed Homes, Kent County Council and the Environment Agency to help new house buyers use water wisely with the Savings on Tap project. This aims to reduce the amount of water used by residents on the new Highland Park development in Ashford. With water-efficient appliances and fittings in 200 homes and a trial innovative method of charging for water with half of the homes charged at the standard rate and the other half charged a seasonal tariff.

*"So far the feedback from house buyers has been positive. We believe that all customers will be better off because of the water efficient fittings and those on the seasonal tariff could see further savings of between 5% and 15%."*

Ashford Borough Council's Chief Executive David Hill is confident for the future. *"The innovative, groundbreaking work already carried out by all those involved has given us a clear strategy to pursue, which will guarantee Ashford is a shining example of how working together and taking a holistic approach can ensure truly sustainable growth."*

## What You Can Do to be Water Wise?

The public also have their part to play by using water wisely. Hosepipe bans and drought orders will remain in place until the South sees a significant increase in rainfall. We are now using 50% more water than we did 25 years ago but a few simple measures could dramatically reduce your water consumption.

### Here are three:

Fix leaking taps, use a water butt to collect rainwater for your garden, install a water meter (these are now free)

There are plenty of other ideas to be found on 'beat the drought' a new website created by all the South East water companies. It has comprehensive information about the drought and how you can help.

For more information on water saving tips visit the following:

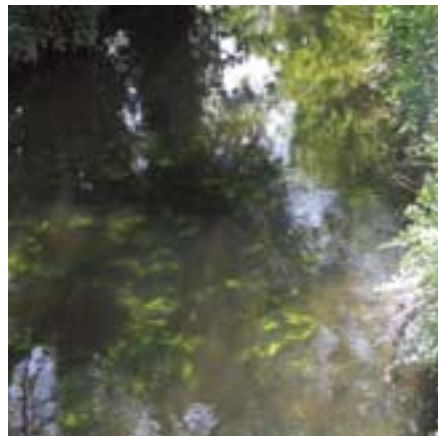
[www.beatthedrought.com](http://www.beatthedrought.com)

[www.midkentwater.co.uk](http://www.midkentwater.co.uk)

[www.southernwater.co.uk](http://www.southernwater.co.uk)

[www.environment-agency.gov.uk](http://www.environment-agency.gov.uk)

You can report any leaks to Mid Kent Water on **0800 614366**



## news in brief

### Improvements to Junction 10

The Highways Agency are due to begin work on the M20 junction in August. Work is expected to be completed by Spring 2007. For more information visit: [www.highways.gov.uk](http://www.highways.gov.uk)

**Website Launched** Ashford's Future has a new website offering the latest news and information on Ashford's growth. To find out more visit: [www.ashfordfuture.org](http://www.ashfordfuture.org)

**Young Voters** Ashford Borough Council has secured government funding to encourage young people to vote. The £6600 will be spent on several projects designed to grab young people's attention.

**Website a Wow** The Council's Licensing online information has received rave reviews - the Society of IT Managers magazine said "Wow! This website provides excellent information about licensing... easy to use, easy to understand and very impressive!"

**Ring Road** Proposals to change the nature of Ashford's ring round will be on view at a public exhibition in June month. Check the council's website and local press for details.

**Park and Ride** Proposals for a landmark scheme to provide the town's first Park and Ride will be on display June 13 and 14 at Ashford International Hotel.

**New Arts website launched** Designed to promote all of the quality arts the Borough continually offers Ashford Presents is led by Ashford Borough Council along with community stakeholders and focuses on nurturing, branding and assisting the delivery of arts programmes including festivals, artworks and venues. For more information visit: [www.ashfordpresents.co.uk](http://www.ashfordpresents.co.uk)

**Building Design Awards** Council planners are searching for entries for their 2006 Design Award Scheme which aims to promote good design and stimulate quality development.

The competition has categories for residential, commercial, and conservation projects with a special award for one-off innovative schemes and is looking for high quality new buildings or works which appeal to the public and make a positive contribution to the local environment.

The competition is open to any new development in the borough completed between 1 January 2001 & 31 January 2006. Closing date 30th June. For further information: Tel **01233 330239** or e mail: [vivienne.wolfe-murray@ashford.gov.uk](mailto:vivienne.wolfe-murray@ashford.gov.uk)

## safe in their hands



**Ashford's police and fire teams are officially the best in Kent at reducing crime and fires making the borough a safer place to live and work. Latest Kent Police figures show Weald Police achieved the highest crime reduction in the county.**

Ashford's District Commander, Chief Inspector Stuart Kehily puts the success down to a commitment to neighbourhood policing and working closely with partner organisations to tackle the root causes of crime.

In a letter to the people of Ashford he talks about the work that has laid the foundations for this latest success and his hopes for the future.

*As the officer in charge of policing the area in which you live and work I am delighted with these latest figures. Working closely with a wide range of organisations and the public together with the hard work and dedication of local officers is the key to this success.*

*The local Crime and Disorder Reduction Partnership has been working hard to tackle the root causes of crime and the Community Safety Unit, a partnership made up of Ashford Borough Council, Kent Police and other partner agencies in the Ashford area has been in place for two years. Working in partnership, the unit has generated a number of successful initiatives to drive down crime and antisocial behaviour.*

*The Chief Constable of Kent has clearly stated his commitment to neighbourhood policing which has continued to be developed and improved in the borough. I hope that many of you may have seen and even met the local officer responsible for policing the area in which you live.*

*The role that neighbourhood officers perform takes a special kind of officer. I am encouraged by comments from the public about their neighbourhood officers and the passion that they have for helping their communities solve problems. They are indeed a great team that have contributed to achieving reductions in crime in their areas.*

*Working together as a community makes us a strong force to be reckoned and we should not be underestimated. My teams will continue to concentrate on issues of diversion, education, design and intervention as well as enforcement. By focussing on the root causes we can achieve sustainable levels of reduced crime and less victims.*

*Crime levels in our district are low but can be even lower with your help. I know we still have many challenges to contend with but by working with our partners and with your help we can make life even safer and much more enjoyable."*

***I am determined to focus on the issues that matter to you in the streets that surround you. ■***

***If you would like to speak to me direct please contact me on: 01233 896161***



If you would like to discuss matters of crime and antisocial behaviour please contact the **Community Safety Unit in Tufton Street on: 01233 660747**



**Ashford's Fire Station is the best in Kent according to Kent Fire and Rescue Service fire reduction figures which show local firefighters have reduced the number of deliberate fires in the borough by a massive 20%.**

Station Manager Lee Rose believes working with partners as well as the public is the key to their success.

*"It's great to see these positive results. It's not only down to the diligence and hard work of the local fire crews but also working closely with Ashford Borough Council, Kent Police and other local agencies.*

*"Making our community a better and safer place requires whole hearted commitment from all the agencies and partners in the area. There is a definite link between anti-social behaviour and deliberate fire setting and by working together through the Community Safety Unit we have been able to tackle some of the underlying causes and opportunities.*

*"By working together the unit has generated a number of initiatives to drive down the number of deliberate fires including replacing plastic rubbish bins with metal ones in some hotspots, a fast response to abandoned vehicles and accumulations of dumped rubbish,*



*these and other initiatives have reduced deliberate vehicle fires by 9% and deliberate rubbish fires by a whopping 26%"*

*"I hope our work prompts people to think about the consequences of their actions. Fire setters put themselves and others at risk, as well as diverting valuable firefighting resources from real emergencies.*

*"There are still opportunities to reduce the number of fires within the borough further. One of the disappointing figures shows that we attended more domestic house fires that ever last year.*

*The main cause of these fires was unattended cooking, which will be our main focus for the coming year." ■*

**Help Kent Fire and Rescue Service continue to reduce fires by following the tips below:**

- Don't leave your rubbish out for longer than is necessary – put it out on the day of collection
- If you see someone fly tipping contact Kent County Council on **0845 3450210**
- Warn children of the dangers of fire
- Keep matches and lighters out of the reach of children and remind them they are not toys

**For more information visit:**  
**[www.kent.fire-uk.org](http://www.kent.fire-uk.org) or call the Community Fire Safety Team on:**  
**01622 698360.**



**Kent Fire & Rescue Service**

In the first of several articles Chief Executive of the Kent Air Ambulance David Philpott introduces the life saving helicopter service and gives us a taste of what's to come.

# saving time- saving life

Kent Air Ambulance



**Established in 1989 The Kent Air Ambulance responds swiftly to 999 calls delivering its medical crew to the scene of an accident or medical emergency and transporting patients to the nearest major hospital or specialist unit, in a fraction of the time taken by a land ambulance. Fast, flexible, flying direct and unhindered at over 150 mph to wherever it is needed the Air Ambulance, continues to save lives by flying up to a thousand missions a year.**

*As a resident of Ashford, it gives me great pleasure to introduce to you, my neighbours, The Kent Air Ambulance, an organisation which I have the great privilege of leading. Not many people set off to work in the morning knowing that the job they do will make a difference in people's lives, even save a life, but such is my good fortune.*

*As Ashford expands over the next few years, and thousands more people set up home in our town, it is imperative that we have the emergency medical infrastructure available to meet the ever increasing needs of the residents. It should bring you some comfort to know that YOUR Air Ambulance is not far away and available should you or your family have an accident or an acute medical emergency. This service is totally independent of the NHS and funded entirely by voluntary donations!*

*The £ 3.5 million helicopter we use is based at our state of the art facility in Marden, near Maidstone, less than 10 minutes flying time from the centre of Ashford. On average it takes only 8 minutes to the scene of an accident or medical emergency and a further 7 to the local hospital. In Ashford's case, this second part of the journey is shortened by the proximity of William Harvey Hospital which has an excellent helipad.*

*Last year the Kent Air Ambulance became the first Helicopter Emergency Medical Service outside London to fly with highly skilled Pre Hospital Critical Care Doctors on board the aircraft. This means we can now get an earlier diagnosis and then transport the patient to the most appropriate hospital (not always the nearest), often in London, where highly skilled medical specialists such as neurosurgeons can have a dramatic impact on the patients outcome.*



**In forthcoming editions of Ashford Voice, I look forward to introducing you to the pilots and medics, the local volunteers who help with the fundraising, the companies whose staff support the work and the patients whose lives we have saved. ■**

The Kent Air Ambulance is one of 16 independent air ambulance operators and is funded entirely by charitable donations, receiving no Government or National Lottery funding.

You can find out more by visiting our website or phoning for an information pack.

**[www.kentairambulance.com](http://www.kentairambulance.com)**

**Tel: 01622 833833**

June/July 2006

# Ashford VOICE

## summer sights summer sounds

**There's plenty to do in the borough this summer from music and theatre to places to visit, things for free and much, much more.**

Over the next eight pages you will find details of hundreds of things to do for the whole family to enjoy.

### Summer Sounds

**The summer gets off to a sizzling start with a series of musical events to suit all tastes. Enjoy jazz, folk, country and classical music. Add to this a choice of excellent bars, pubs and restaurants and you have Ashford Town Centre at its best.**

#### **Sunday July 2 Around the World**

A new festival of food, drink and performance art spanning across the globe in North Park.

#### **Friday July 7 - Sunday July 9 Ashford Jazz Festival**

Live jazz bands in and around the town centre.

#### **Saturday July 15**

##### **Ashford Folk and Country Day**

A range of folk and country sounds set in Ashford town centre.

#### **Saturday July 15 - Saturday July 29**

##### **Arts at St Mary's**

This festival of recitals, concerts & exhibitions celebrates its 10th year along with Mozart's 250th anniversary. St Mary's Parish Church.

#### **Saturday July 22**

##### **Ashford Carnival**

The colourful carnival arrives in the Town Centre around 4pm and heads down to Ashford's Festival in the Park.

#### **Saturday July 22 & Sunday 23**

##### **Festival in the Park**

Last year's popular cultural fundraiser returns with local live music, dance, arts and crafts in North Park.

#### **Sunday July 30**

##### **Create Music Festival**

Looking set to be bigger and better than last year, local bands, solo artists & DJ's play alongside headline acts in Victoria Park.

### Fri 16 -Sun 25 June

#### Stour Music Festival

**This annual festival held in picturesque All Saints Church in Boughton Aluph presents ten concerts of early music over two weekends.**

This year's festival opens with Ex Cathedra giving a performance of Latin American Vespers, and a Late Night Concert of unaccompanied Bach Violin Sonatas played by Elizabeth Wallfisch.

Ensemble Fidicinium will also feature during the first weekend with the Stour Music Clerks giving a Late Night Concert of Responsoria for Holy Week, alternating Gregorian Chant with Polyphonic settings by Gesualdo.

The second weekend starts with The King's Consort performing Water Music by Handel and Telemann and more. Mozart features strongly in the final two programmes, with a programme of three one-act comic operas (2 Murders and a Marriage) by and about Mozart, devised by David Owen Norris, and the festival will end on Sunday 25th June with a performance of Mozart's Mass in C minor, given by the Stour Festival Choir and Orchestra, conducted by Mark Deller.

Enjoy a drink before or after the concert in the Festival Marquee, or stay and have supper before returning to the candle-lit Late Night Concert. Teas are also served after the afternoon concerts.

For Brochure phone: **01233 812740**  
For Box Office phone: **01227 378188**  
or email: **boxoffice@canterbury.gov.uk**

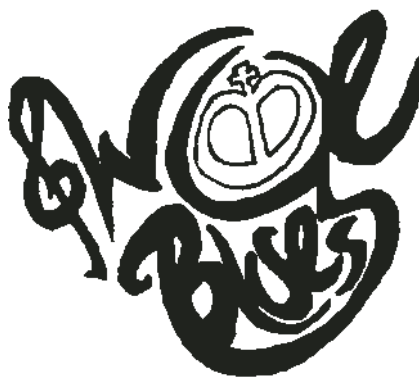
### Sat 17 June

#### Wye Blues & Real Ale Festival

**Check out the Wye Blues & Real Ale Festival taking place on June 17.**

This is a family-friendly event offering 12 hours of superbly talented blues musicians on two stages; a wide range of cask ales and beautiful surroundings... what more could you want for a day out in June.

For more information visit:  
[www.wyeb blues.co.uk](http://www.wyeb blues.co.uk)



### Sun 2 July

#### Around the World

**This new multicultural celebration of exotic food, performance, art, dance and music spanning the globe takes place on Sunday July 2 in North Park, Ashford.**

Organised by local community leaders this open-air experience recognizes Ashford's fascinating cultural diversity and will appeal to all ages.

The event will showcase performances including a Chinese lion dance, Bhangra and dhol drumming, a gospel choir, belly dancing, Kurdish folk dance, and a Gurkha knife dance to name just a few. There will also be stalls demonstrating traditional arts and selling local and international food and products.

The event is supported by Ashford Borough Council, KCC, Weald Police, Kent Fire & Rescue Service, Ashford Crime & Disorder Reduction Partnership.



### Fri 7-Sun 9 July

#### Ashford Jazz Festival

**Big band, contemporary, traditional or New Orleans – whatever jazz style you are looking for this year’s festival has it all with performances from internationally renown jazz icons, local jazz groups and school students.**

From Friday July 7 to Sunday July 9 there’s a great line up in store and several venues to choose from. You don’t have to be a jazz devotee to enjoy great a experience so forget the shopping take a seat in the High Street, Park Mall or County Square have a cup of coffee and enjoy.

**Friday July 7 - 8.00pm - late:** The Festival kicks off at Oranges in Apsley Street with Colin Welch & Friends an eight piece modern jazz ensemble featuring Colin on Saxophone with two well respected international jazz greats Don Rendell and Henry Lowther.



**Saturday July 8:** Jazz on the Street sponsored by the Ashford Town Centre Partnership.

**10am - 4pm:** The day begins with hot traditional jazz on stage in the Lower High Street from the Strolling New Orleans Echoes who then stroll through town taking jazz to visitors and shoppers. Taking over on stage in the Lower High Street will be the New Orleans Jazzmen followed by the Canterbury Jazz Pilgrims.

**11.30am – 12.30pm:** See the Very Big Penguin Band in County Square.

**1.30am – 4.00pm:** Strings and Things in County Square.

**1.30am – 2.30pm & 3.00pm - 4.00pm:** The Very Big Penguin Band in Park Mall.

**7.30pm - 10.30pm:** Jazz at St Mary’s Church. This is jazz entertainment at its best. The concert begins with the Roger Lewin Trio jazz followed with the fantastic Highworth Jazz Orchestra with Colin Welch as MD, vocalist Nicola Perry and featuring jazz legends Don Rendell and Henry Lowther. With a licensed bar provided by Oranges in the marquee outside tickets are £5 available in advance by calling 01233 627427 or 631306 or pay at the door.

**Sunday 9 July 9 3pm - late:** The jazz festival concludes where it began at Oranges in Apsley Street with The Nick Peck Trio, excellent local jazz talent at its best, followed by Engine Clutch and Gearbox with guitar, bass, drums and vocals they perform funky jazz with magnificent skill and ability.



### Sat 15 July

#### Ashford Folk and Country Day

**Folk singers, morris dancing, mummers, clog dancing and much more will be entertaining the crowds in Ashford town centre on Saturday July 15 with the return of this popular festival of all things folk and country.**

This year performances take place in the Lower High Street and in County Square but don’t get too hung up about timings, this a relaxed and laid back event and things may slip a little so why not simply come and stay all day so as not to miss a thing!

It’s not just for ‘folkies’ bring the whole family along there’s something for everyone – it’s music, it’s dance and it’s fun.

**10am:** MC Mick Hubert will be kicking things off at on the stage in the Lower High Street with the talented and professional Kent-based Irish folk trio Carmine.

**11.15am - 12.15 pm:** Next up are Crooked Style the great and popular local English Folk duo with bags of entertainment .

**12.30pm - 1.30pm:** What follows is also local the fantastic Tantethera & Friends folk festival regulars.

**1.45pm - 2.45pm:** Wow! Chris Taylor fiddle player from Fiddlers Dram is performing for us this year as Chris Taylor’s Allstars a folk trio of renown.

**2.45pm 3.15pm:** Hang on to you hats it’s time for The Rabble Folk Theatre. Performing traditional dances, mumming plays and much more in front of the stage this is a must see.

**3.15pm- 4.15pm:** The finale with a Folk Sextet called Follia all the way from Belgium on their first visit to Ashford. They promise to provide a fantastic and rousing end to the day.

<h1>what's on</h1> <p>in &amp; around the area in June</p>		<b>Sat 27 May - Fri 2 June</b> <b>Children's Fun Week</b> East Sussex Railway, Tenterden. <b>087 060 060 74</b>		<b>Tue 30 May - Sun 4 June</b> <b>Family Garden Games Week</b> Traditional games for the family including croquet, golf, tennis and bowls. Beech Court Gardens, Challock, 10.30am – 5.30pm. <b>01233 740735</b>					
		<b>Thur 1</b> <b>Make a bat!</b> Workshop and bat watching for children aged five plus. Singleton Lake Car Park, 7pm – 9pm. <b>Tel: 01233 813307</b>		<b>Sat 3</b> <b>Ashford Poets</b> Starbucks, Ashford <b>Tel: 01797 363828</b>		<b>Sat 3</b> <b>Discover Ashfords Hidden Treasures</b> Guided town walk. 10.30am from Ashford Library <b>01233 664410</b> <b>Country Beer Festival</b> CAMRA host their annual beer festival with real ales, ciders and perry. Rare Breeds Centre, Woodchurch <b>01233 861493</b>		<b>Sat 3 - Sun 25</b> <b>Summer exhibition</b> of bold, bright oil paintings by Joel Arnstein & photography by Tommy Candler. West End House Gallery, Smarden. 10am – 6pm, Thurs – Sun <b>01233 770261</b>	
<b>Wed 7</b> <b>Bonham Valuation day</b> Smallhythe Place, Tenterden 11am - 4pm <b>01580 762334</b>				<b>Sat 10</b> <b>Hamstreet Country Fayre</b> Huge range of crafts and attractions for all. Marsh Rd, Hamstreet, 12 noon-5pm <b>01233 731106</b> <b>Kent Schools Athletics Competition</b> Track and Field, Julie Rose Stadium, Ashford. 9am – 5pm <b>01233 613131</b>		<b>Sat 10</b> <b>Boughton Lees Pleasure Fayre</b> Village Green. 2pm – 5pm.			
<b>Sat 10 Sun 11</b> <b>A Day Out with Thomas</b> Special services - Kent & East Sussex Railway, Tenterden. <b>087 060 060 74</b>				<b>Sun 11</b> <b>Hamstreet Festival of Transport</b> Biggest show of all types of vehicles in the Ashford area. Marsh Road, Hamstreet. 11am-5pm <b>01233 731106</b> <b>Teddy Bears' Picnic</b> Watch teddy bears abseil from the mill. Willesborough Windmill. 2pm – 5pm <b>01233 733416</b>		<b>Fri 16 - Sun 25</b> <b>Stour Music Festival</b> Early English Baroque Festival. Boughton Aluph Church, nr Wye. <b>01233 812740</b>			
<b>Sat 17</b> <b>Music at the Mill</b> Wining Dining and music in the barn with Mantissa Opera. Willesborough Windmill, 7pm for 7.30pm. <b>01634 241997</b> <b>Summer Fete</b> Stalls, attractions, refreshments and prize draw. Great Chart School, Singleton. 1.30pm. <b>01233 620040</b>		<b>Sat 17 Sun 18</b> <b>A Day Out with Thomas</b> Special services - Kent & East Sussex Railway, Tenterden. <b>087 060 060 74</b>				<b>Sun 18</b> <b>Classic Car Rally</b> A fun day with classic and veteran vehicles, parades, competitions, auto jumble and more. Rare Breeds Centre, Woodchurch <b>01233 861493</b> <b>Open Gardens</b> Variety of village gardens, refreshments and plant marquee. Hamstreet village, 10am – 5pm <b>01233 733869</b>			
<b>Mon 19 - Sat 24</b> <b>Architecture Week</b> Student designs for art in the public realm for Ashford. Ashford Library, Town Centre. <b>01233 330352</b>		<b>Fri 23</b> <b>Merry Wives of Windsor</b> Shakespeare performed by Chapterhouse Theatre Company in a beautiful open-air setting. Bring a picnic. Beech Court Gardens, Challock. Gardens open 6pm, performance starts 7.30pm <b>01233 740735</b>		<b>Sat 24</b> <b>Bilsington Craft Fayre</b> 200 stalls, rural activities, garden, free parking. Children free. St. Augustine Priory, Bilsington 10am – 5pm. <b>01233 720252</b> <b>Delphinium Society Open Day</b> Godinton House and Gardens, Ashford. 2pm-5.30pm. <b>01233 632652</b>					
<b>Sat 24</b> <b>Summer Show</b> Tenterden & District Horticultural Society. Junior School. Tenterden. 2pm-3.30pm				<b>Sat 24</b> <b>Hothfield Village Fair</b> Entertainment, charity stalls, attractions, charity fun auction and more. Village Green, Hothfield. 11am-4pm. <b>01233 635373</b>		<b>Sun 25</b> <b>Sunday Fun Day Fete</b> A fun filled afternoon for all the family. Godinton Primary School, Ashford. 2pm-5pm. <b>01233 610241</b>		<b>Fri 16 - Sun 25</b> <b>Victorian Experience</b> Recreate the Victorian era. Kent and East Sussex Railway, Tenterden <b>087 060 060 74</b>	

## Local Theatre Listings

### Sinden Theatre, Tenterden

**June 9** Mozart Preposterous  
 Starring the acclaimed clown and mime artiste Nola Rae.

**June 14** Mon Oncle (Film) - Starring Jacques Tati, Adrienne Servantie, Jean-Pierre Zola and Alain Becourt.

**July 14** Mr Hulot's Holiday (Film) - Starring Jacques Tati.

**July 22** Fashion Show - Presented by The Canterbury Oast Trust.

For full listings, times, tickets prices and booking call **01580 763826** or visit [www.sindentheatre.biz](http://www.sindentheatre.biz)

### Smallhythe Place, Tenterden

**June 10** Celebrating Shakespeare – Peter Mould and cast provide a romp through the life and times of the Bard.

**June 17** The Death of Nelson  
 A tragicomedy starring Robert Cohen on the life and politics set over a 18 year time span between the high tide of Thatcherism and the first term of the Blair government.

<h1>what's on</h1> <p>in &amp; around the area in July</p>		<b>Sat 1</b> <b>Ashford Poets</b> Starbucks, Ashford <b>Tel: 01797 363828</b>	<b>Sat 1</b> <b>Family History Day</b> Learn how to trace your family history. Kent and East Sussex Railway, Tenterden. <b>087 060 060 74</b>  <b>Barbecue and Barn Dance</b> A fun evening with live music, food and bar. Barbecue from 4pm, dancing from 6.30pm. Brook and Hinxhill Village Hall. <b>01233 813750</b>		
		<b>Sun 2</b> <b>Around the World</b> A new multi-cultural celebration of exotic food, performance art dance & music spanning the globe. Open-air event organised by local community leaders, North Park, Ashford, 12pm – 8pm. <b>01233 896345</b>			
<b>Sat 1-Sun 2</b> <b>Graham Williams &amp; Robert McKellar</b> Exhibition. Internationally acclaimed sculptor and painter. West End House Gallery, Smarden. 10am-6pm. Thurs-Sun. <b>01233 770261</b>	<b>Sun 2</b> <b>Orlestone Church Flower Festival</b> Themed flower displays, refreshments and stalls. St.Mary's Church, Hamstreet/Orlestone, 10.30 am <b>01233 732833</b>  <b>Branch Line Weekend</b> Re-live the early days of the railway. Special services. Kent and East Sussex Railway, Tenterden. <b>087 060 060 74</b>		<b>Tues 4</b> <b>Valuation Afternoon</b> Bonhams experts value antiques. Talk by John Sandon (Antiques Roadshow) on ceramics & glass. Godinton House & Gardens, Ashford 1.30pm <b>01233 632652</b>	<b>Fri 7-Sun 9</b> <b>Ashford Jazz Festival</b> Jazz of all styles in and around Ashford Town Centre	<b>Sat 8 &amp; Sun 9</b> <b>Orlestone Church Flower Festival</b> Themed flower displays, refreshments and stalls. St.Mary's Church, Hamstreet/Orlestone, 10.30 am <b>01233 732833</b>  <b>Branch Line Weekend</b> Re-live the early days of the railway. Special services. Kent and East Sussex Railway, Tenterden. <b>087 060 060 74</b>
<b>Sun 9</b> <b>Darling Buds Classic Car Show</b> Hugely popular annual event featuring hundreds of classic cars and more. <b>07977 060350</b>  <b>Explore the Meadows!</b> A short walk to see the colourful meadows in the Green Corridor. Meet at the SWAN Community Centre, Ashford, 10.30am – 12.30pm. <b>01233 813307</b>		<b>Sat 15 - Sat 29</b> <b>Arts at St.Mary's</b> Festival of recitals, concerts & exhibitions celebrates its 10th year along with Mozart's 250th anniversary. St.Mary's Parish Church. <b>01233 629165</b>			
<b>Sat 15</b> <b>Ashford Folk &amp; Country Day</b> Folk and Country music in Ashford Town Centre.		<b>Thurs 20</b> <b>Thursday Ramblers Walk</b> Come for a summer stroll on this three mile walk. Meet - Singleton Lake Car Park. <b>01233 813307</b>			
<b>Sat 22</b> <b>Ashford Carnival</b> Arrives in the Town Centre around 4.00pm & then heads to Ashford's Festival in the Park, North Park. <b>Fashion Show</b> Canterbury Oast Trust. The Sinden Theatre, Tenterden. <b>01580 763826</b>  <b>Flower &amp; Dog Show</b> Traditional village fete, flower & dog show. Family fun with many attractions. Stone in Oxney Cricket Field, 2pm – 4.30pm. <b>01233 758106</b>		<b>Sat 22 - Sun 23</b> <b>Ashford Festival in the Park.</b> Return of last year's popular cultural fundraiser with local live music, dance, arts and crafts. North Park, Ashford (Sat 10am – 11pm and Sun 10am – 10pm).			
<b>Wed 26</b> <b>Fun Day!</b> A special day of fun for all the family. Rare Breeds Centre, Woodchurch. <b>01233 861493</b>		<b>Sat 29</b> <b>Sun 30</b> <b>MG Car Rally</b> An annual summer event. Kent and East Sussex Railway, Tenterden. <b>087 060 060 74</b>			
<b>Sun 30</b> <b>Rolls Royce Rally</b> Annual rally for up to 100 cars old and new. Belmont House, near Faversham. <b>01795 890202</b>  <b>Willesborough Windmill Garden Party</b> Dress up and enjoy the occasion. 4pm – 7pm. <b>01233 733416</b>  <b>Create Music Festival</b> Local bands, solo artists and DJs play alongside headline acts. 12 noon – 8pm, Victoria Park, South Ashford. <b>01233 330352</b>					

**June 26** Eric Munro in Concert – A rare chance to see and hear two of the folk world's greatest singer songwriters, both born in Scotland but emigrated to Australia.

**July 1 and 2** Callas – Starring Anna Korwin this candid portrayal written by Jean-Ives Picq is based exclusively on authentic interviews given by Maria Callas between 1957 and 1970.

**July 20 to 23** Merry Wives of Windsor – This Summer Theatre Company event is the National Trust's longest running.

**July 28 to 30** Rotten Perfect – A new play by Claire Jephcott about Ellen Terry.

For full listings, times, tickets prices and booking call **01580762334** or visit [www.nationaltrust.org.uk](http://www.nationaltrust.org.uk)

**The Marlowe Theatre, Canterbury**  
 For what's on the Marlowe Theatre call **01227 787787** or visit [www.marlowetheatre.com](http://www.marlowetheatre.com)

**The Leas Cliff Hall, Folkestone**  
 For what's on at the Leas Cliff Hall call **01227 787787** or visit [www.leascliffhall.co.uk](http://www.leascliffhall.co.uk)

### Sat 15-Sat 29 July

#### Happy Tenth Birthday Arts at St Mary's

**Ashford Federation of Arts present a celebration of a wide range of arts forms including painting, music of many kinds, and floral art with performers including both professionals and local artists including local school children.**

From July 15 to 29 the festival will be celebrating its 10th birthday with a range of events guaranteed to please everyone. The quality and breadth of the festival's content has continued to improve every year and 2006 is no exception.

With both evening and free lunchtime events the festival gives everyone a chance to sample what's on offer.

Mozart is on many of the programmes to celebrate the 250th anniversary of the composer's birth.

Organisers hope that thousands of residents and visitors will take this opportunity to enjoy a very special occasion.

**Saturday 15 July 19.30** Sacconi String Quartet with a programme including works by Mozart and Schubert. Tickets £10 - concessions Family Tickets

**Monday 17 July 12.30** Steve Bridgeland with the Jazz Frio. Entry free, retiring collection. 19.30 Cranbrook Town Band. Tickets £6 – concessions

**Tuesday 18 July 12.30** Organ Recital by Philip Bell Entry free, retiring collection. 19.30 Tenth Anniversary Birthday Party and evening viewing. All welcome

**Wednesday 19 July 12.30** Guitar Ensemble Concert directed by David Green. Entry free, retiring collection

**Thursday 20 July 12.30** Songs from the shows, with Sandra Brown. Entry free, retiring collection

**Friday 21 July 12.30** Clarinet Recital with Alison Givney accompanied by Stephen Harrison. Entry free, retiring collection. 19.30 Robin White celebrates Music in Flowers. Arrangements featuring Phantom, Bollywood Dreams and many others. Tickets £6.

**Saturday 22 July 19.30** Wheatsheaf Choir from Doncaster bring a programme of music for Female Voices. Tickets £6 – concessions & family tickets

**Sunday 23 July 15.00** Orchestral Concert, given by Stoneleigh Youth Orchestra. This thriving young orchestra visit for a special afternoon concert at the start of their European tour.

**Monday 24 July 10.00-15.00** Art Workshop with David Embry and Brian Oxley. Ring 01233 634718 to register. 12.30 Saxophone Recital by Helen Small accompanied by Stephen Harrison. Entry free, retiring collection

**Tuesday 25 July 10.00-15.00** Art Workshop with David Embry and Brian Oxley. Ring 01233 634718 to register. 12.30 Piano Recital given by former Norton Knatchbull student Tim Foxon. Entry free, retiring collection

**Wednesday 26 July 12.30** Mezzo Soprano Catherine St Ville sings a range of sacred and secular songs. Accompanied by Stephen Harrison. Entry free, retiring collection. 19.30 Charity Concert given by local musicians in aid of St John Ambulance, the Parish Church and Ashford Borough Community Arts Trust. Tickets £6 - no concessions

**Thursday 27 July 12.30** Piano Recital: Stephen Harrison. Bach, Haydn, Schubert, Chopin and Grieg. Entry free, retiring collection. 19.30 Organ Recital by Tom Bell. Tickets £8 – concessions & family tickets

**Friday 28 July 12.30** Phil Sibbald 'Mostly Mozart' operatic arias. Entry free, retiring collection. 19.30 International Pianist Paloma Kouider-Nicod programme includes Beethoven, Liszt, Scarlatti and the Italian Concerto by Bach. Tickets £10 – concessions & family tickets

**Saturday 29 July 19.30** Kent Youth Chamber Orchestra Gala Concert Conductor Daniele Rosina. The programme includes symphonies by Haydn and Beethoven, Faure Pavane, opening with Mozart's Overture to the Marriage of Figaro. Tickets £10 – Concessions & Family Tickets

Tickets available from Ashford Tourist Information, The Churchyard Ashford.  
**Tel: 01233 629165**

### Sat 22 & Sun 23 July

#### Festival in the Park

**Last year's popular fundraiser returns to Ashford's North Park on Saturday July 22 and Sunday July 23. With a wide variety of musical talent to enjoy you're ensured a great time and a chance to raise money for local performing arts causes.**

The fun starts on Saturday at 1pm with music dance, arts and crafts and Ashford's carnival procession joining the festival at 4pm.

Local bands Tantethra, Where's Brian?, Fundamental Skills and more will be playing over the two days - so make sure you don't miss these fun - packed free days out.



### Sat 29 July

#### Ashford Rocks!

**Ashford's local band scene can boast two great gigs in July (and on the same weekend!)**

On Saturday July 29 Ashford Rocks hosts The Mayor's Charity Festival at Homelands, this indoor event promises a good mix of rock, blues both electric and acoustic. It all kicks off at 2pm and runs through to 11pm, food will be available and at £5 all day (come and go as you please) it's a bargain with proceeds going to the Mayor's Charity.

#### Up and coming Gigs at Homelands

**June 2:** The Sharpsters, BattleSka Galactica, The Red Shift

**June 16:** Tortilla Army, Spell Mississippi, Springtide Calvary

**July 7:** Kujata, StandAside, Misguided

**July 8:** Led by Zeppelin

**July 2:** Fundamental Skillz, Sikhona, plus one other to be confirmed.

For more information visit:  
[www.ashfordrocks.com](http://www.ashfordrocks.com)



### Sun 30 July

#### Create

**Back, bigger and better the annual showcase for local and the county's best upcoming bands will be running flat out in Victoria Park from 2pm to 8pm on Sunday July 30 with great original music.**

This year the festival will double in size with a range of bands from those signed up to professional record labels, local favourites and newcomers

Confirmed line up includes Sizen, Lakes, Anasazi, Silversky, D-finitive, Tremors, Sikhona, Karona, Chase Scene, Shibby, DanEdWill and 9-14 year rockers Scrap Metal.

The exiting line up comes as a result of organisers running a competition for potential performers and receiving 50 demo cds in response.

New for this year is the dance and digital projection tent - "DJ's and VJ's" catering for a whole new section of the alternative scene. Organised in partnership with local music collective Tengo the idea is to promote new, innovative electronic music not heard in Ashford before. DJ's include Vic Spanner and Uneven Dots.

**With all this, a funfair on site, stalls and other diversions Create 2006 looks like being the best one yet.**

**Create**  
music festival 2006

### Teenage summer holiday activities

**No need to bored this summer - there's fishing, horse riding, kayaking, music, arts and crafts, circus skills, sports, trips out and more on offer from the county council's youth and community projects.**

Check out Ashford North Youth Centre in Essella Road, Christ Church Youth & Community Centre, Stanhope Road and Towers School, Faversham Road and see what's available

There will also be events in Victoria Park and a shuttle leisure van which can offer arts & crafts, computing, pool and table tennis will be out and about three evenings a week.

Activities are subject to availability and weather, pre-booking is essential for some activities and a small charge may be required to cover some costs. Some activities are suitable for disabled young people.

For more information and to register your details leave your name, address and age and say how you heard about the scheme.

Call: **01233 663862**  
Text: **07951 249269**  
e: [summerscheme@ashfordyouth.org.uk](mailto:summerscheme@ashfordyouth.org.uk)  
write to:  
**SK8SIDE, PO Box 89, Tannery Lane, Ashford, Kent. TN23 1X2**



### Summer fun that won't break the bank!

Looking for some low cost ideas for the summer?  
Then why not try some of the following suggestions.

#### Free

##### Local Parks and Playgrounds

Pack up a picnic and take the family to a local park or village green. Check out Victoria Park, North Park or the Memorial Gardens in Ashford. The borough also has 42 equipped play areas in rural and urban locations.

**Hothfield Common** Check out the 58 hectares of heathland and lowland valley bog and woodland.

**Local Villages** Ashford is lucky to have some of the prettiest villages in Kent so why not dust off the bike, take a bus, train or the car and check them out .

##### Kings Wood Challock.

Green footprint markers lead you on a 3.5-mile sculpture walk amongst the ancient woodland.

**01233 740040**

##### Ashford Skate & BMX Park

Stour Centre. Practice your skills and show off to your friends at this purpose-built outdoor venue. Open early until late.

**The Warren** Ashford. Explore the Warren, a wildlife oasis consisting of superb old oak trees, sweet chestnut coppice and an area best described as a hidden garden.

#### Under £5

##### Cineworld Multiplex Cinema

Ashford - Enjoy bargain Tuesdays.  
**08712208000**

##### Kent & East Sussex Railway

Tenterden. Buy a platform ticket for a £1 and watch the trains steam by or visit Col. Stephen's Museum - again - just £1 per person. **08706006074**

**Parish Pedals** Try one of the six themed circular cycle routes around Ashford. Choose from 'Ghosts, Kings and Rebels' or 'Pitch and Putt & Poetry' among others. Leaflets £1 from tourist information.

You can get ideas, further information and leaflets by calling Tourist Information on **01233 629165**

The parish council's have websites why not check them out?

You can also visit Ashford Borough Council's website  
**www.ashford.gov.uk**



#### Farmers' Markets

<b>Egerton</b>	Fri, 2pm - 4.30pm, Egerton Millennium Village Hall.	<b>01233 756286</b>
<b>Rolvenden</b>	Thurs, 10am - 12 noon, St Mary's Church & Village Hall.	<b>01797 252248</b>
<b>Tenterden</b>	2nd Sat of every month, 9.30am - 1pm Recreation Ground Rd.	<b>01580 765111</b>
<b>Wye</b>	1st & 3rd Sat of every month, 9am - noon, Village Green.	<b>01233 813303</b>



### Support Your Local Tourist Attractions

**Nostalgic railways, windmills, vineyards, beautiful gardens and historic houses are just some of things to be found on your doorstep and with beautiful countryside, hop gardens, oast houses and picture postcard villages there is plenty to see and do in the Borough this summer.**

#### Here are just few suggestions

**Agriculture Museum** Brook  
**01304 824969**

**Ashford Borough Museum**  
**01233 631511**

**Beech Court Gardens** **01233 740735**

**Biddenden Vineyards and Cider Works**  
**01580 291726**

**Chapel Down Winery** **01580 766111**

**C M Booth collection of Historic Motor Vehicles** **01580 241234**

**Godington House and Gardens**  
**01233 620773**

**Kent & East Sussex Railway** Tenterden  
**01580 291726**

**Rare Breeds Centre** Woodchurch  
**01233 861493**

**Smallhythe Place** Tenterden  
**01580 762334**

**Tenterden & District Museum**  
**01580763310**

**Willesborough Windmill** **01233 661866**

**Woodchurch Village Life Museum**  
**01233 860240**

For more ideas call Tourism Information on **01233 639166** or pick up a leaflet from their offices in The Churchyard, Ashford.

## bin it & bag it...



**Every year Ashford Borough Council spends almost £1m trying to keep the borough clean, a staggering £750,000 of which is spent purely cleaning up the rubbish discarded on our streets and green spaces.**

The council needs your help to try and reduce this amount and Paul Jackson, Head of Environmental Services is asking everyone to help make Ashford a cleaner place to live and work.

He explains: *"Every year there is more litter and cost of cleaning the Borough goes up and every year I think of how much more we could be providing the people of the borough with all that money."*

*"The increased tendency for eating on the streets, in cars and the*

*increased packaging we have to deal all adds to the problem which is not simply an urban one but one that blights every area of the Borough even our beauty spots."*

The council is supporting Kent County Council's Clean Kent campaign and is keen to encourage others to do the same. The campaign backed by district and parish councils, the Environment Agency, police and many others aims to put the sparkle back into Kent's town streets and country lanes.

So far, three of the borough's primary schools, Great Chart, Godinton Primary and St Theresa's, have taken part in this year's Litter Sleuth programme where pupils have litter picked around their school. Community groups have taken part too. In town residents and volunteer groups have cleaned up local areas while in rural areas, eight of the borough's Parish Councils have taken part in Clean Up campaigns, with members of their communities collecting rubbish around the villages.



*"This is a great start and I hope more groups will get involved and more people will think before they drop litter and hang on to it until they can get to a bin, back to work, school or home."* ■

For more information about the Clean Kent Campaign ring **0845 345 0110** or visit **[www.cleankent.co.uk](http://www.cleankent.co.uk)**

You can contact Ashford Borough Council's Clean Team by calling **01233 330535**



It's National Poop Scoop week from June 26 to July 2 and dog owners are being urged to make sure they clean up after their pooches and ensure we can all enjoy lazing in the grass in our parks and open spaces this summer.

Paul Jackson said: *"It costs councils in England £22m a year to clean and remains one of the most complained about issue. We know it's just a small minority of irresponsible owners who let the rest down and give dogs a bad name, so if you don't already, make sure this is the year when you 'grab it, bag it and bin it'. You can even get free bags for cleaning up after your dog from the Civic Centre and Tenterden Office."* ■

## 150 Not Out!

**Great Chart Cricket Club celebrates its 150th anniversary this year with a line up of 'must see' games including a recreation of a Victorian game with the club's first recorded rivals Woodchurch CC and a game against an Old England XI.**

There are no records to show exactly when cricket was first played at the Godinton ground, however it is known that John Davis a well respected resident of the parish organised the formation of the club.

In the early years games were played on any day of the week - except Sunday and when Sunday games were eventually organised they had to be over in time for the evening Church service.

During WW1 and WW2 and the interwar period the club found it difficult to get enough men to field a team, a situation repeated in the 1950's and 60's. In 1972 Great Chart became one of the founding members of the Kent Village League. Since then membership has continued to grow and the club currently has over 40 playing members, runs one Saturday, two Sunday teams and a healthy Colts section. The club also has a thriving social programme and excellent facilities.

Having survived two world wars, gone through three pavilions and seen many ups and downs Great Chart is still going strong and looks set to be here in another 150 years. ■

### Great Chart CC Cricket Week 2006

#### Monday 31st July

Great Chart C.C. v Woodchurch C.C.  
2.30 pm (in full Victorian kit)

#### Tuesday 1st August

Great Chart C.C. v Ashford Select XI  
2.30 pm

#### Wednesday 2nd August

Great Chart C.C. v Old England XI  
(past England stars) 1.30 pm

#### Thursday 3rd August

Great Chart C.C. Fun Day 10.00 am

#### Friday 4th August

Great Chart C.C. v Chairman's XI 2.00 pm

For more information contact

Neil Picton **07887772145** or visit:

**[www.greatchart.play-cricket.com](http://www.greatchart.play-cricket.com)**



## The Many Faces of the Julie Rose Stadium

With outstanding track and field athletics facilities the stadium is a springboard for world-class athletes such as recent Commonwealth gold medal winner Lisa Dobriskey whose early training took place here in Ashford.

But the JRS also has the Colin Jackson Suite, an indoor running shute, café and bar facilities available for other events including conferences, exhibitions, weddings and parties while outside is a new multi use games area used for netball, basketball and Brazilian Soccer training.

Many local sports and community groups already use the JRS as their base and all members of the public are welcome. ■

If you think the Stadium can help you call:  
**01233 613131.**



### Bring the whole family to the Stour Centre this summer

**Grown ups** - get in shape or stay in shape at Contours Fitness Centre, book a court for badminton, squash or indoor football, or try a group fitness class.

**Seniors** - come along to the popular Evergreen activities including keep fit classes.

**Youngsters** - as well as the popular fun camps there's trampolining, basketball, gymnastics and a new multi-sports course plus tumble time for the under 5's.

There's crèche facilities for centre users, the Fair Bean coffee shop and the chance to try a relaxing therapy from Revive.

**Special Offers** this summer include - eight-week memberships for only £25.00 (includes use of Contours Fitness Studio, all group fitness classes, use of the sauna, the running track at the Julie Rose Stadium and free parking at the Stour Centre, as well as reductions off of the crèche and racquet sports).

**Bring your Dad in for free** between June 16 and 19 to celebrate Father's Day.

**Buy one fitness class get another free** - valid until 31st July.

This is just a taste of what's on offer - for more information pick up a leaflet from reception or call **01233 639966**



## Gardening Calendar

**These are the months when the garden is at its peak and all your hard work pays off.**

Perennials and shrubs cover the ground smothering out weeds while salads and summer vegetables reach a crescendo. The lawn won't be growing quite so fast as the weather gets hotter and drier - so get the essentials out of the way and then sit down and enjoy the view.

But summer holidays are looming so make sure the lawn is cut and the beds weeded before you leave and enlist family or friends to water while you are away -

**remember the hosepipe ban!**

**Mow lawns** and feed if needed raising cutting blade height

**Dead heading** - Keep on top!

**Watch out for** - Lily Beetle, Blackspot, powdery mildew and rust on roses, containers drying out,

# june

■ **Sow** lettuce, rocket, spring onion, radish, oriental leaves including pak choi and Chinese cabbage, maincrop carrots, peas, swedes, sweetcorn, French and runner beans, courgettes, squashes and pumpkins



cabbage white butterflies laying eggs on brassicas and potato blight on potatoes and tomatoes

**Last Chance** - Plant peppers, cucumbers, tomatoes, melons and aubergines in the greenhouse or in

# july

■ **Sow** main crop carrots, early peas, spring cabbage, kohlrabi, turnips, lettuce, radishes, endive, chicory, oriental leaves including Chinese cabbage and pak choi, winter radishes and spring cabbages

■ **Water and feed** containers and hanging baskets, and keep newly planted trees, shrubs, perennials and rock plants watered in dry spells

tubs on the patio in June and plant out bargain-basement bedding plants early in July as the garden centres will be selling them off cheaply!

## Ever Thought of An Allotment?

If you are interested in growing your own fruit and vegetables but don't have the space what about an allotment? Ashford Borough Council owns almost 400 allotments and while many sites are full there a few plots available. Allotments Officer Julie Thomas explains: "If the site you are interested in is full you can put your name on a waiting list and we can usually allocate you a plot within 12 months."

Julie will be out and about with the Allotment Forum Chairman Penny Winston this month looking for Ashford's best plots for the annual allotment competition. Certificates are awarded for various categories including best plot and best newcomer plot on each site and presented to the winners in November each year.

There is also an opportunity to enter prize allotment specimens in the Summer Show, which the Ashford Allotment Forum hold each year. This year it is being held at the Baptist Church Hall in Hythe Road, Ashford on Saturday 19 August 2006. ■ **For more information contact Julie Thomas on 01233 330476**

## win £100

### Prize Sudoku June/July

Fill in the empty squares so that each row, each column and each smaller 3x3 block contains all the numbers from 1 to 9.

Once you have completed the puzzle, fill in your details on the coupon and post to Ashford Voice for a chance to win £100!

6	8		3	1	9			
	2	1			6	7		
9					2			8
3	9	6						
				6				
						2	5	6
4			5					2
		9	8			5	3	
			6	7	4		8	1

Name:

Address:

#### Terms & Conditions:

Please complete and return this entry form along with your completed sudoku puzzle to:  
**Ashford Voice, Ashford Borough Council, Civic Centre, Tannery Lane, Ashford, Kent TN23 1PL.**  
 The decision of the editor is final and no correspondence will be entered into.  
**Closing date for entries is Friday 15th July 2006**

## ASHFORD VOICE READER'S SURVEY

### WIN £50 FOR YOU AND £50 FOR YOUR FAVOURITE LOCAL CHARITY

We want to know what you think of the new style Ashford Voice and what you would like to see featured in the future.

To ensure we produce a magazine you want to pick up and read complete the form below.

**1 On a scale of 1- 5, do you find Ashford Voice:**

- Easy to understand
- Visually attractive
- Has a good mix of text and photos
- Has a good balance of people based and information giving articles is entertaining

**2 On a scale of 1- 5 what items interest you most in Ashford Voice?**

- News pages
- Features about people
- Details of events
- Competitions
- Council service information
- Other – please state

**3 On a scale of 1 – 5 what would you like to see more of in Ashford Voice?**

- Community news and activities
- Competitions
- Council news (e.g. various projects being undertaken)
- District news
- Features about people
- Information about services the council provides
- Leisure information
- Music reviews
- Questions and answers to queries
- Readers letters
- Sporting features
- What's on (events in and around Ashford)

**4 What information do you feel is missing, or what would you do differently?**

**5 Do you have access to the internet?**  
 If yes, would you reply to other surveys and competitions online? Y  N

**6 In what other ways would you like to find out about Ashford council activities?**

**7 Do you have any other comments about the way in which Ashford Borough Council currently communicates with its residents?**

**8 Are you male or female?**

- M  F

**9 How old are you?** (please tick)

- Under 18  18-24  25-34  
 35-44  45-54  55-64  
 65 and over




Complete and return to **Ashford Voice, Ashford Borough Council, Civic Centre, Tannery Lane, Ashford, Kent. TN23 1PL.** Only original forms will be accepted. Closing date 1 July 2006.



## Ideas to Make Your Business more profitable

Since we launched in May 2006 the Romney Enterprise Gateway has tried to find new, interesting and free ways to support its members. As well as getting advice and guidance for our members we produce themed idea sheets, which our members find useful.

For example, did you know there are many ways to strengthen the bottom line and to make your business more profitable? Maximising sales does not always mean maximising profit – so don't think selling more is the only way to become more profitable.

### Our profitability idea sheet lists ten top tips – here are five to be going on with:

**Increase Prices** - simply put up your prices. This approach is useful if your customers are not too price sensitive - you should be reviewing your prices regularly anyway.

**Reduce Your Costs** - be innovative, cut down on unnecessary expenses, work smarter and cheaper.

**Negotiate Better** - go on a South Kent College Negotiation Skills course and learn how to get more for less and how to give less for more.

**Shop Around** - try and find supplies elsewhere. We recently found a Kent stationery supplier that offered us an 85% discount on some of the products we buy regularly. A good result for the cost of a short phone call.

**Economies of Scale** - if possible, buy in bulk and reap the rewards of lower unit costs. Only good if your cashflow is healthy enough to allow you to do this.

These are simple ideas - but then keeping it simple is what successful businesses do! ■ **Jason Martin** Gateway Director

Membership of the Romney Enterprise Gateway is completely free and is open to any new business on and around Romney Marsh.

Call **01797 369336** Or visit **www.romneyenterprisegateway.net** and see what we can do for you.



## Ashford has some great award-winning businesses!

By **Jo James**, Membership Manager, Kent Invicta Chamber of Commerce.

**Our part of Kent has such a wealth of successful businesses that to single out any for special accolade is a difficult task.**

But Kent Invicta Chamber of Commerce took up the challenge launching an annual 'excellence in business' award competition this year and two Ashford companies have walked away with prizes.

Bluestone plc construction services based at the Evegate Business Centre and independent estate agents Stevens and Co from The Singleton Centre beat off fierce competition to win the Excellence in Customer Service and Entrepreneur of the Year awards respectively.

The awards, which also featured categories for Business of the Year and Most Promising New Business were open to companies across the chamber's catchment area of Ashford, Canterbury, Maidstone and Malling.

Evegate's Business Development Manager Ian Pinnington and Andy Stevens, Managing Director of Stevens and Co collected their etched glass awards at a ceremony at the International Study Centre, set in the precincts of Canterbury Cathedral

Business of the Year went to APT Howfield of Canterbury with Most Promising New Business going to JobsinKent.com of Maidstone.

The awards were sponsored by several local businesses, and an independent panel of judges made up of business people had the unenviable task of choosing the winner.

We inaugurated these awards to highlight and celebrate the quality of businesses we have throughout the area. ■



For more information about Kent Invicta Chamber of Commerce call **01233 503838** or visit **www.ashford-chamber.co.uk**

## Community safety unit



Kent  
Police



Ashford's Community Safety Unit aims to wrap up crime this summer

**Every summer thefts from sheds, garages and gardens increase because thieves know they are more likely to find valuable equipment left outside and sheds and garages insecure for long periods.**

Ashford's Community Safety Unit is offering special property marking packs with wrap-round stickers aimed at deterring thieves.

Packs catering for bikes, sheds/garages and home security are available from the Ashford police station. ■

For more details contact your local crime reduction officer on **01233 896336**

## Summertime is Barbecue Time!

**Follow these simple tips from Kent Fire and Rescue and make sure your barbecues are safe and fun.**

- Ensure your Barbecue is in good working order
- Make sure the Barbecue is on a flat surface away from sheds, fences and foliage
- Use only enough sufficient charcoal to cover the base
- Only use recognised firelighters or starter fuel, and only use on cold coals.

### **NEVER USE PETROL**

- Keep children and games well away
- Never leave your Barbecue unattended
- Empty ashes onto bare garden soil - never put ashes straight into a bin

## Take Care in the Countryside

**Every year fire is responsible for the destruction of thousands of acres of countryside and wildlife habitats.**

A cigarette butt thrown from a passing vehicle can mean the loss of whole fields of standing crops and glass bottles left lying in grass or woodlands can cause fires of huge proportions. -These fires could all be avoided if we all just took a little extra care. ■

For more information visit **www.kent.fire-uk.org**  
or call the Community Fire Safety Team on **01622 698360**



Kent Fire &  
Rescue Service

## Crime Cutting Cash in Community Chest

**If you are part of a group with ideas on how to cut crime and disorder in your area but are short of cash help could be at hand in the form of a Community Chest grant from your local Crime and Disorder Reduction Partnership.**

There is £20,000 to give away each year with the maximum grant set at £5,000. Bids over £500 will need to show evidence of match funding so you will need to have some money to put towards the project or be able to fundraise.

A Community Chest grant can fund such things as items of equipment; publicity; training; travel costs; expenses; professional fees; buying or leasing of land or building and lots more.

It is not necessary for groups to have a constitution to apply but the group should have agreed aims and objectives and have it's own bank account. ■

For more information contact Alison Curties, Community Liaison Officer on **01233 330892**



## Council's work with Community Sector is Highly Commended

**The council's work with Ashford's Future to bring together the borough's 700 voluntary and community groups has been highly commended in a national competition run by the Municipal Journal.**

A key success of the pioneering work to help the sector find new ways of working and bringing them together to help fulfil their crucial role in creating a sustainable community has been the creation of the Ashford Community Network.

On receiving the Commendation, Kim Harlow, Voluntary Sector Manager for Ashford Borough Council said, "I am delighted that our work has been recognised in this way.

*The partnership we have formed is unique in the South East and has brought together a huge range of organisations in a strong coalition. This commendation is a tribute my colleague at Ashford's Future Simon Bannister and to all those groups in the voluntary and community sector who work so hard to deliver services to people who are often in great need of help and support.'*

Richard Finlinson MBE, the Chairman of the Ashford Community Network continued, "The Government has long acknowledged the importance of the voluntary sector in delivering services to the community. Ashford has been a pioneer in bringing together these groups so that they can be more effective in the services they deliver and also provide support to each other.

*It is fantastic that this work and commitment across the sector has received this recognition." ■*



Do you want to buy a home of your own but think you can't afford it?  
**HomeBuy and Moat can help.**



Moat Homes Limited is a charitable housing association

**Specialists in Affordable Home Ownership and Key Worker Housing**

FOR MORE INFORMATION  
VISIT OUR WEBSITE OR TELEPHONE:  
**www.moat.co.uk**  
**07002 662846**

How much water is wasted by leaving the tap running while cleaning your teeth?

A bathful in a week and ...



small changes to your daily routine can make a **big** difference.

Help us to beat the drought -  
please use water wisely

mid kent water



Keep up-to-date with  
the latest situation  
by visiting our website:  
[www.midkent.water.co.uk](http://www.midkent.water.co.uk)