




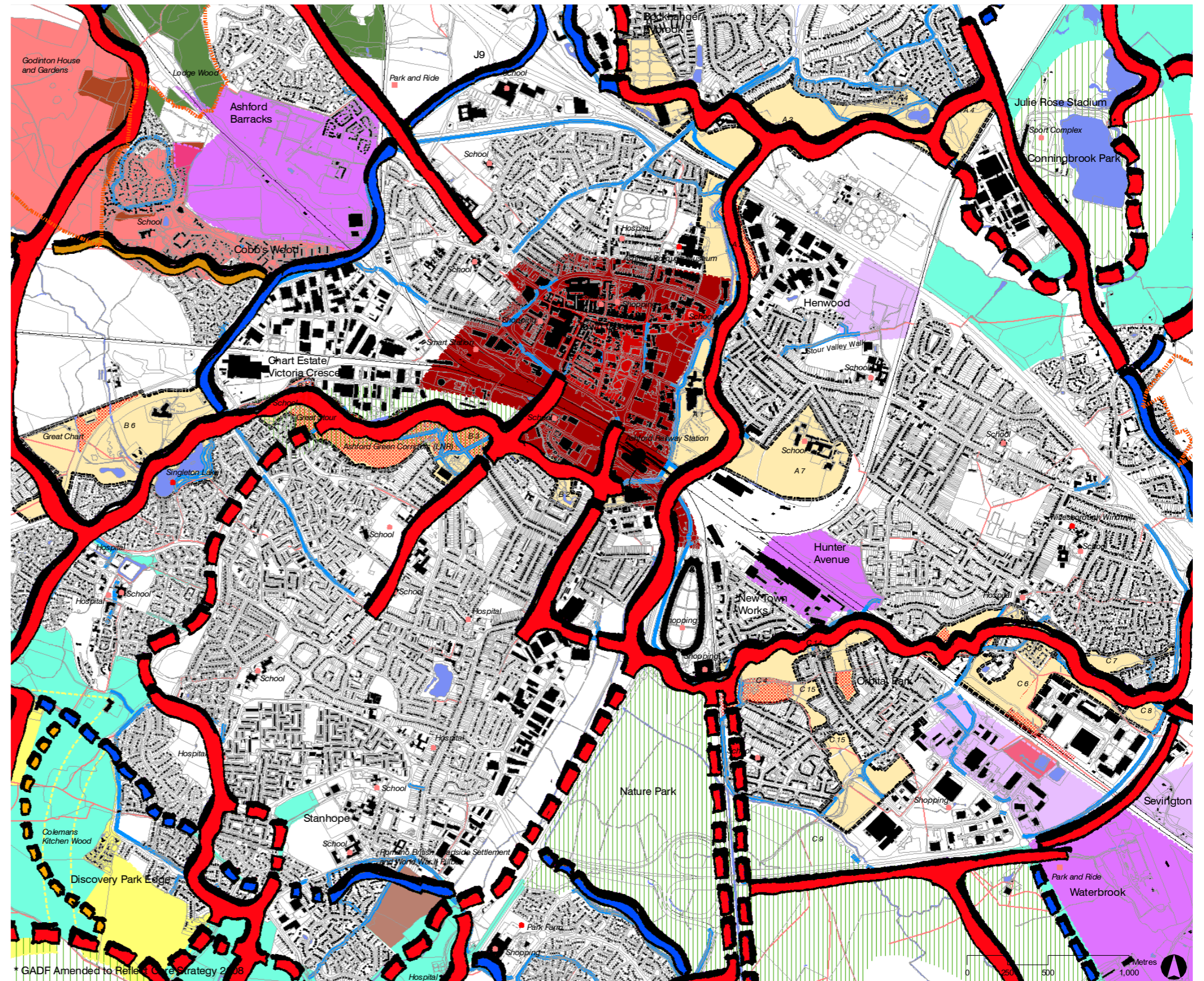


-  Component Area with Detail Units
-  Recommended New Public Open Space
-  Strategic Routes (existing)
-  Strategic Routes (recommended)
-  Circular Routes (existing)
-  Circular Routes (recommended)
-  Outer Recreational Routes (existing)
-  Outer Recreational Route (recommended)
-  Promoted Footpaths (existing)
-  Promoted Routes - Rerouted (recommended)
-  Promoted Cycleway (existing)
-  Right of Way (existing)
-  Destinations
-  Promoted Environmental Destinations
-  Area of Outstanding National Beauty
-  Ancient Woodland
-  Watercourses and Waterbodies
-  Urban Area
-  Town Centre Regeneration Area
-  Primarily Employment Development Area
-  Primarily Residential Development Areas
-  Mixed Use Development Areas
-  Main Urban Extension area (CS5)
-  Possible Direction of Post 2021 Urban Extension
-  Strategic Parks (Core Strategy 2008)
-  Primary Parks (Original GADF Document)
-  Visual Envelope (approximate)
-  1.2 km Extent from Ashford (based on GADF development)

There is no public open spaces map for this component as no recommended new public open spaces are proposed.

3.3.7 Ashford Town Centre – Access (Map 36g)

The riverside connections through the centre of Ashford are well established, but two of the strategic routes shown on the accessibility diagram are not yet in place. One of these is the important connection between the future Discovery Park and the town centre via the Whitewater Dyke floodplain and Willesborough Dykes. Another is a link over the railway to the south west of Conningsbrook Park. Secondary routes link the strategic riverside routes to adjacent neighbourhoods. The points of connection are a series of important gateway landscapes which merit investment.



Map 36g – Ashford Town Centre - Access