

Sustainability and Energy Efficiency Services

The five main criteria for achieving compliance

Dwellings	Buildings other than dwellings
Dwelling CO ₂ emissions are less than a target set to improve standards.	CO ₂ emissions are less than a target set to improve standards.
Performance of fabric and services are no worse than set minimum standards.	Performance of fabric and services are no worse than set minimum standards.
The dwelling has passive measures to limit summertime temperatures	Where cooling is not being provided then there are passive measures in place to prevent excessive solar gains in summer
The building when constructed must be consistent with the predicted CO ₂ emissions.	The building when constructed must be consistent with the predicted CO ₂ emissions.
Sufficient information must be provided on the operation of the building.	Sufficient information must be provided on the operation of the building.

Providing energy efficient and sustainable services for commercial and residential buildings



Pricing

- **iSBEM** assessments are priced on an individual basis depending on the complexity of the scheme. Please contact Iain Butler-Gallie or Les Bambridge to discuss your proposals and receive a tailor made, cost-effective quote.
- **SAP** assessments are priced at a set fee per dwelling. However, discounts may be available for schemes involving multiple plots or repeated plot types.
- **Code for Sustainable Homes** assessments are again priced individually depending on the complexity of the proposed scheme.

Contacts

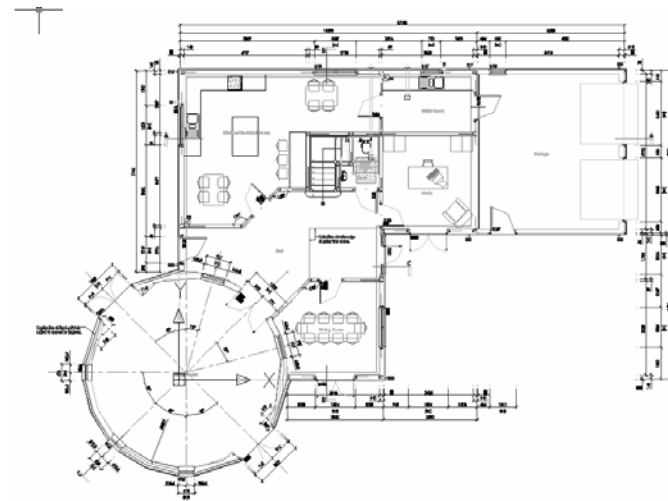
- **iSBEM -** **Iain Butler-Gallie/ Les Bambridge**
TEL: 01233 330398/ 277
E-MAIL: iain.butler-gallie@ashford.gov.uk/
les.bambridge@ashford.gov.uk
- **SAP-** **Jack Allen**
TEL: 01233 330579
E-MAIL: jack.allen@ashford.gov.uk
- **Code for Sustainable Homes-** **Glyn Davies**
01233 330258
E-MAIL: glyn.davies@ashford.gov.uk

Or for any information on the above please contact **Tim Parrett**



Services that we offer:

- **iSBEM** (An interface for Simplified Building Energy Method) assessments.
- **SAP** (Standard Assessment Procedure). Including **TER** (target emission rate) and **DER** (dwelling emission rate) calculations.
- **Review** your designs and advise on how to achieve compliance with the minimum standards required in Part L of the Building Regulations.
- Provide Energy Performance certificates (**EPC**)
- Undertake **Code For Sustainable Homes** assessments.



Why carry out an Energy Assessment?

Following the recent changes to Part L of the Building Regulations it has become necessary to assess the energy performance of residential and commercial buildings. Sustainable developments are often preferred by the local planning department.

Why has the new Part L been introduced?

The new Part L aims to minimise atmospheric emissions of CO₂ to meet the European Energy Performance of Buildings Directive (EPBD).

How are the required targets achieved?

There are five main criteria that must be met in order to achieve compliance with the new documents L1A/L1B and L2A/L2B.

SAP (Standard assessment procedure)

- **SAP 2005** assesses the energy efficiency of a dwelling by calculating its annual CO₂ emissions. SAP ratings are compulsory for all new builds, changes of use and in some cases where an existing dwelling is being extended.

All our SAP assessors are **accredited** and use DEFRA licensed software.

Energy Performance Certificate

- **Energy Performance Certificates** are derived using the SAP calculation procedure. As of **April 2008** these will be compulsory for every dwelling when built in order to guide a prospective purchaser as to the energy efficiency of the property.

SBEM (Simplified Building Energy Method)

- **SBEM** assessments are compulsory for all of the following:
 - Detached non-domestic new builds
 - Non domestic large extensions
 - Common parts of residential accommodation
 - Dwellings over 450m² floor area.

Code for Sustainable Homes

- **Code for Sustainable Homes** assessments balance environmental performance with the need for a high quality of life and a safe and healthy internal environment.

The issues assessed are grouped into nine categories: energy, water, pollution, materials, waste, ecology, health and well-being, management and surface water run off.

Training, Workshops, Seminars and other Services

Ashford Borough Council can provide a comprehensive education and development service to suit your required training needs. Other services such as Fire Risk Assessments and Disabled Access Audits are available.

We have delivered this service to a number of clients over the last six years including Leeds University, West Kent Health Authority, East Kent Health Authority, Kent Building Control, Medway Health Authority, CIOB and numerous private practices.

CPD certificates will be issued with all training events and if you have a specific training or service need please contact Iain Butler-Gallie to discuss your requirements.