

EAST STOUR SOLAR FARM

SEI Volume 3 - SEI Figures

PREPARED ON BEHALF OF



January 2024



EAST STOUR SOLAR FARM - SEI VOLUME 3 - SEI FIGURES

PREFACE

This Supplementary Environmental Information (SEI) Figures Volume forms the third part of a four volume SEI which provides additional information addressing points raised by consultees subsequent to the submission of the East Stour Solar Farm planning application (Ashford Borough Council reference 22/00668/AS). This information supplements the findings of the Environmental Impact Assessment (EIA), the ES of which accompanied the planning application. The volumes of the complete SEI document are:

Document	Title	Contents
SEI Volume 1	SEI Non-Technical Summary	Summarises the key contents of the SEI for the non-technical reader
SEI Volume 2A	SEI Written Statement	Presents the full SEI text
SEI Volume 2B	SEI Appendices	Presents the appendices referred to in the SEI Written Statement
SEI Volume 3	SEI Figures	Presents updated and additional figures referred to in the SEI Written Statement
SEI Volume 4	Visualisations	Presents additional visualisations referred to within the SEI Written Statement

A complete set of application and SEI documents can be downloaded from the project website, as detailed in the box below.

Printed SEI copies can be purchased at a cost of £200+VAT or digital versions, either as a download or on CD-ROM free of charge.

To order copies, please contact Engena Limited at:

The Old Stables, Bosmere Hall,
Creeping St Mary, IP6 8LL.

info@engena.co.uk

or download from:

<https://www.edf-re.uk/renewables/east-stour>

The Developer may also be contacted at:

east.stour@edf-re.uk or 0800 0194 576

SEI FIGURE LIST

Introduction

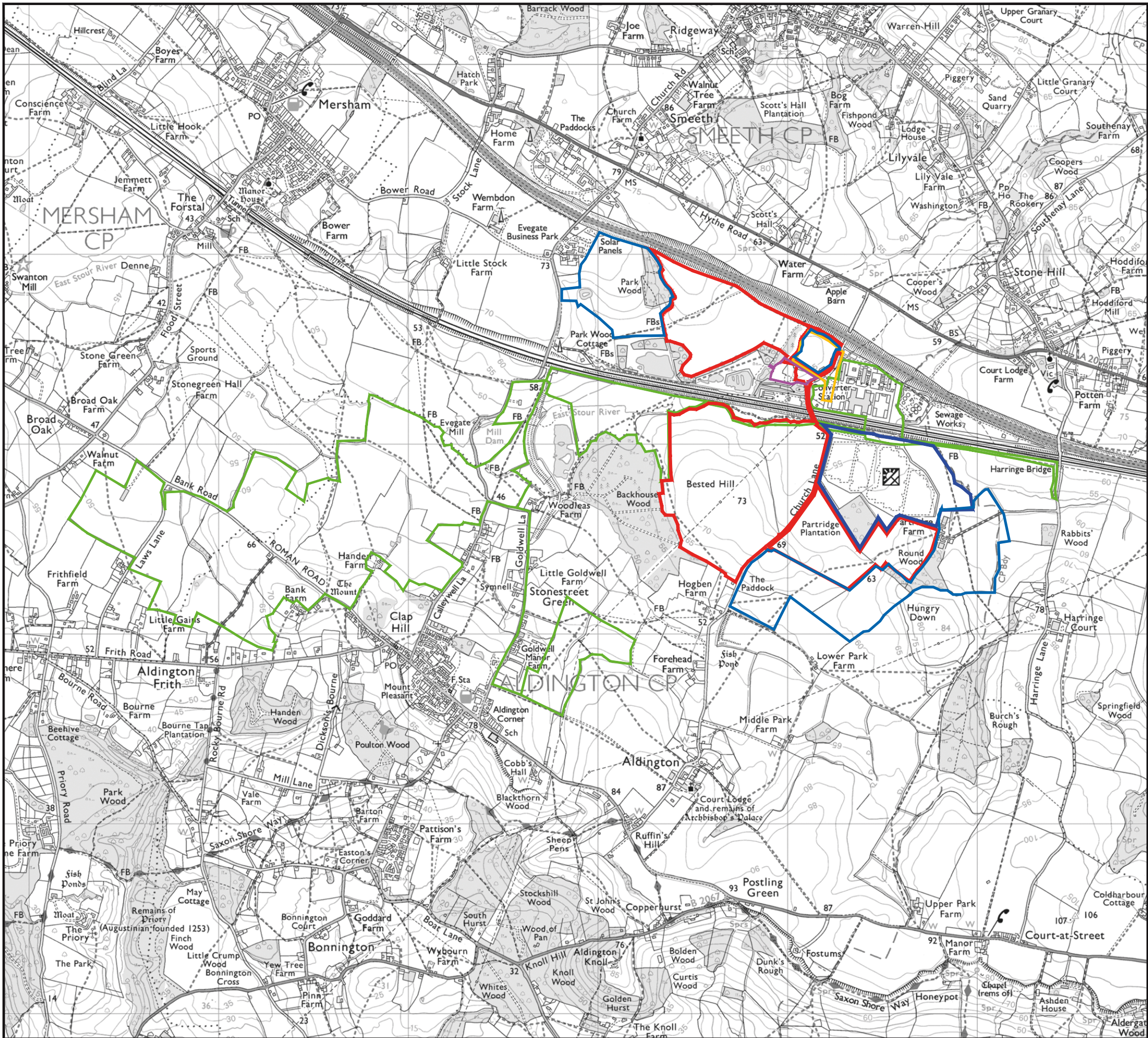
- 1.1 - Cumulative Developments
- 1.2 - Proposed Site Layout (North) REV M [replaces ES Figure 1.2 north]
- 1.2 - Proposed Site Layout (South) REV M [replaces ES Figure 1.2 south]
- 1.3 - Proposed Site Layout (Aerial Image Underlay - North) [replaces ES Figure 1.3 north]
- 1.3 - Proposed Site Layout (Aerial Image Underlay - South) [replaces ES Figure 1.3 south]

Landscape and Visual Impact Assessment

ES Figures referred to in the SEI LVIA Chapter have been updated to include for the amended red line boundary. These are provided as updates rather than new information and presented maintaining the ES Figure numbers as SEI Figures 11.1 to 11.9 'Rev A'. Additional SEI LVIA figures then follow on the numbering nomenclature.

- 11.1 Rev A - 5km ZTV
- 11.2 Rev A - Landscape Character Plan - Kent County LCAs
- 11.3 Rev A - Landscape Character Plan - Ashford
- 11.4 Rev A - Landscape Character within Kent Downs AONB
- 11.5 Rev A - Landscape Designations
- 11.6 Rev A - Recreation Routes and Visitor Attractions
- 11.7 Rev A- Public Rights of Way
- 11.8 Rev A - Cumulative ZTV with Sellindge Solar Farm
- 11.9 Rev A - Mitigation Proposals Plan
- 11.10 - Layout Progression
- 11.11 - Viewpoint 6 (Layout Refinement)
- 11.12 - Viewpoint 7 (Layout Refinement)
- 11.13 - Viewpoint 8 (Layout Refinement)
- 11.14 - Cross Section Locations
- 11.15 - Cross Section A
- 11.16 - Cross Section B
- 11.17 - Cross Section C
- 11.18 - Cross Section D

- 11.19 - Cross Section E
- 11.20 - Cross Section F
- 11.21 - Cross Section G
- 11.22 - Cross Section H
- 11.23 - Cross Section I
- 11.24 - Cross Section J
- 11.25 - East Stour SEI CZTV Development Scenario 2
- 11.26 - East Stour SEI CZTV Development Scenario 3



Project:

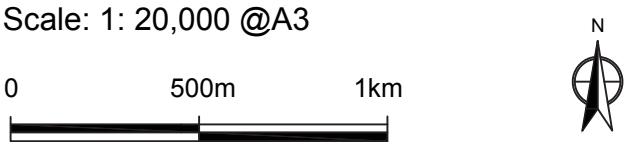
East Stour Solar Farm



- Key:
- East Stour Solar Farm application boundary
 - Sellindge Solar Farm boundary
 - Sellindge BESS boundary
 - Sellindge Grid Stability Facility boundary
 - Stonestreet Green Solar boundary
 - Red line landowner's immediately adjoining landholding

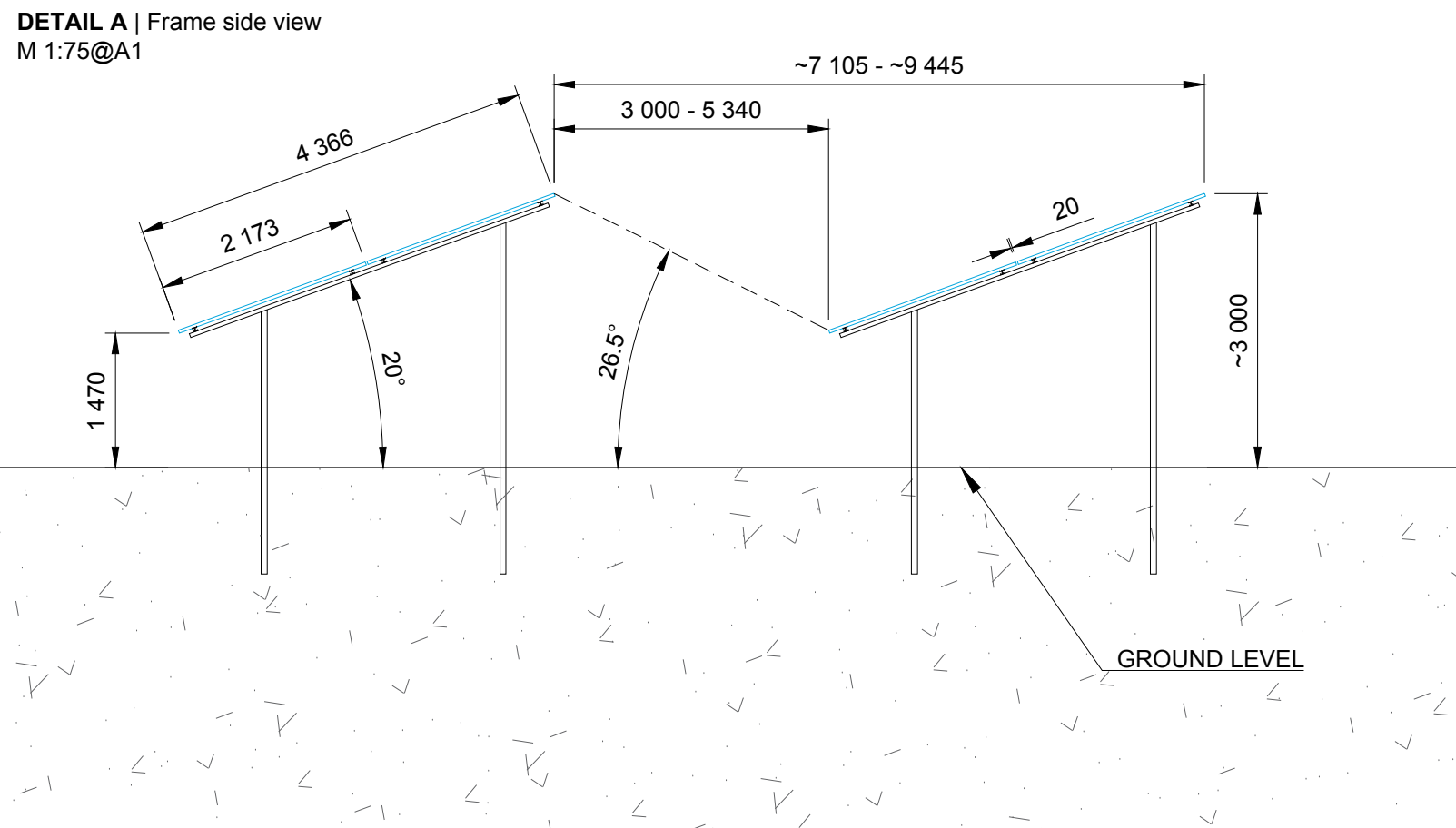
Notes:

- Reproduced from Ordnance Survey digital map data © Crown copyright 2023. All rights reserved. Licence number 100053544.



SEI Figure: 1.1
Cumulative Developments

Drawn by: BJD
Checked by:
Date: 11-12-23



- Notes:
1. All dimensions to be confirmed on site prior to installation.
 2. All dimensions are indicative only and in mm unless otherwise specified.
 3. Drawing based on:
 - "East Stour - EA Agreed 51.3m contour.png";
 - "Detra-Solar_Ground-Mount_Project Form - East Stour.docx";
 - "OS_1_25_000_raster_-_Explorer_691545_900093";
 - "OS_Terrain_5_691545_900094";
 - "Sellindge - All Constraints Merged V3.gpkg";
 - "Sellindge - Access Tracks V3.gpkg";
 - "SEL-PP-TCL-DRG-P001-O_122.08.16.dwg";
 - GE Imager Date: 30/03/21

- Legend:
- Site boundary
 - BESS boundary
 - Perimeter fence
 - Maintenance track
 - Welfare
 - Store
 - Inverter/ Substation Unit
 - Substation container

System description:

No. of modules:	107 926
Module type:	Canadian Solar CS7L-590MB
Dimensions:	2173x1305x35
Substructure type:	2 modules in portrait
Tilt angle:	20°
Shading angle:	~26.5°
Azimuth from South:	Due south
Pitch distance:	~7 105mm - ~9 445mm
Row to row distance:	3 000mm - 5 340mm
No. of inverters:	252
Inverter type:	Huawei SUN2000-215KTL-H0
Power ratio:	1.21 / 1.28 @215kVA
No. of AC combiners:	-
No. of Transformers	20
Fence area:	~65.49 ha
Fence length:	~9 038 m
Total area:	~103.90 ha



Revisions:

Rev	Date	Comments	Drawn
E	14/12/21	Additional equipment	AP
F	25/03/22	Central substation added	AP
G	11/04/22	Side elevation changed	AP
H	07/06/22	Substation relocated	AP
I	27/06/22	OS Map amendment	AP
J	22/09/23	Site boundary updated	IM
K	10/10/23	Site boundary updated	IM
L	04/12/23	Map added	IM
M	03/01/24	OS map, BESS boundary added	IM

Project: East Stour
Location: Church Lane, Aldington, UK
51°6'3.99"N 0°57'57.56"E
Title: Figure 1.2 Proposed Site Layout (North) REV M

Drawn: DETRA / AP
Scale: 1:2500@A1
Drawing No: ENGN1006-100
Checked: IB
Date: 03/01/24
Rev: M

engena

Engena Limited
The Old Stables
Bosmere Hall
Creeting St Mary
IP6 8LL
www.engena.co.uk

Do not scale from this drawing. Site verify all dimensions prior to construction. Report all discrepancies to the drawing originator immediately. This drawing is to be read in conjunction with all relevant documents and drawings.

Proposal only