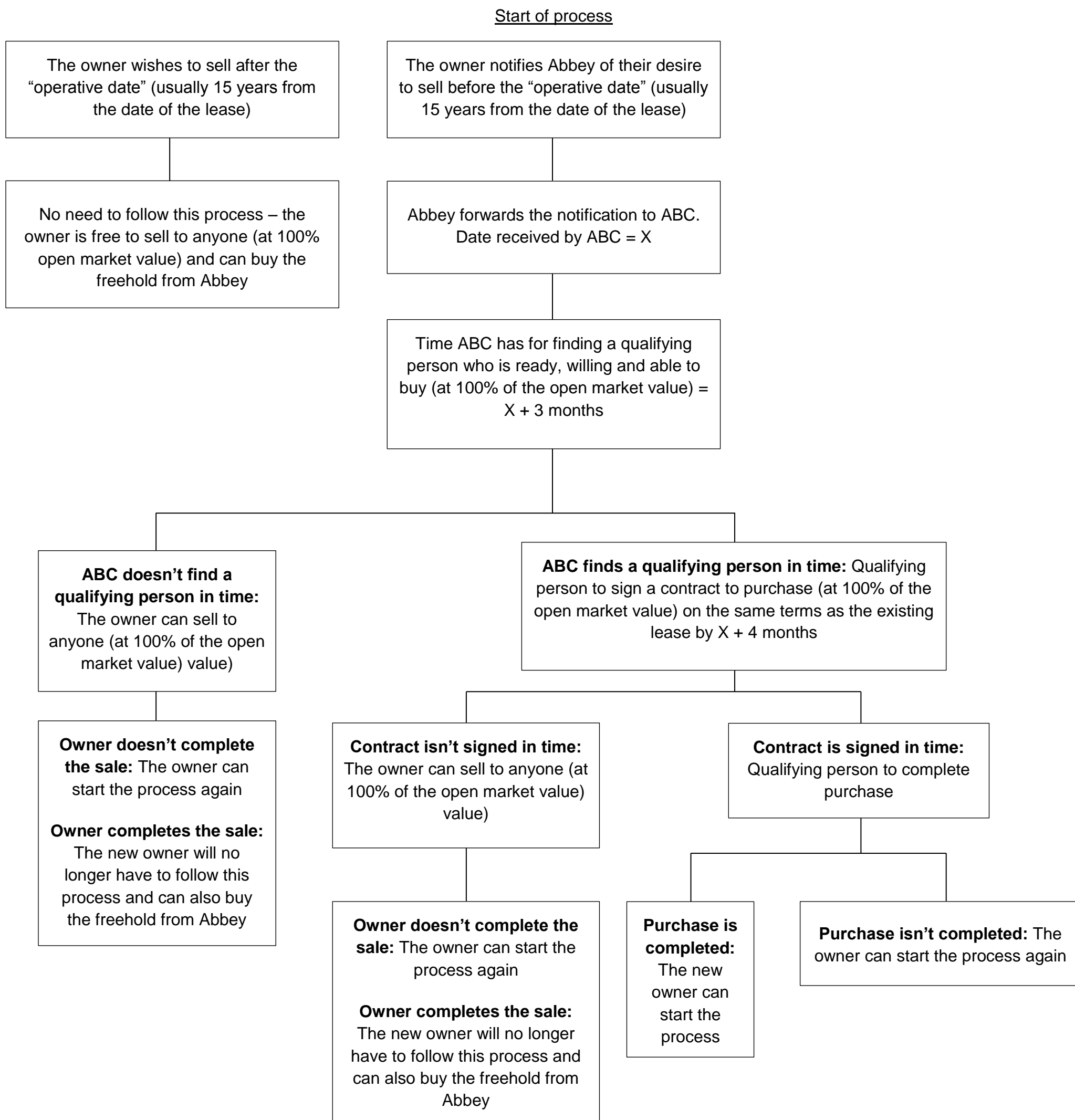


**Summary of Sale Process for Affordable Units at Lodge Wood  
(applies to leases with no restriction on sale price – check the lease first)**



This summary is for a leasehold unit that the owner wishes to transfer to another owner. It assumes the “Standard Sale Deed for Phase 2” is not the lease. It is a guide only and is meant to indicate what might happen.

**You must not rely on this summary: You must check your own lease and get advice from a solicitor.**