

Pluckley Parish Neighbourhood Plan Review

Information Statement for Referendum on 2nd May 2024

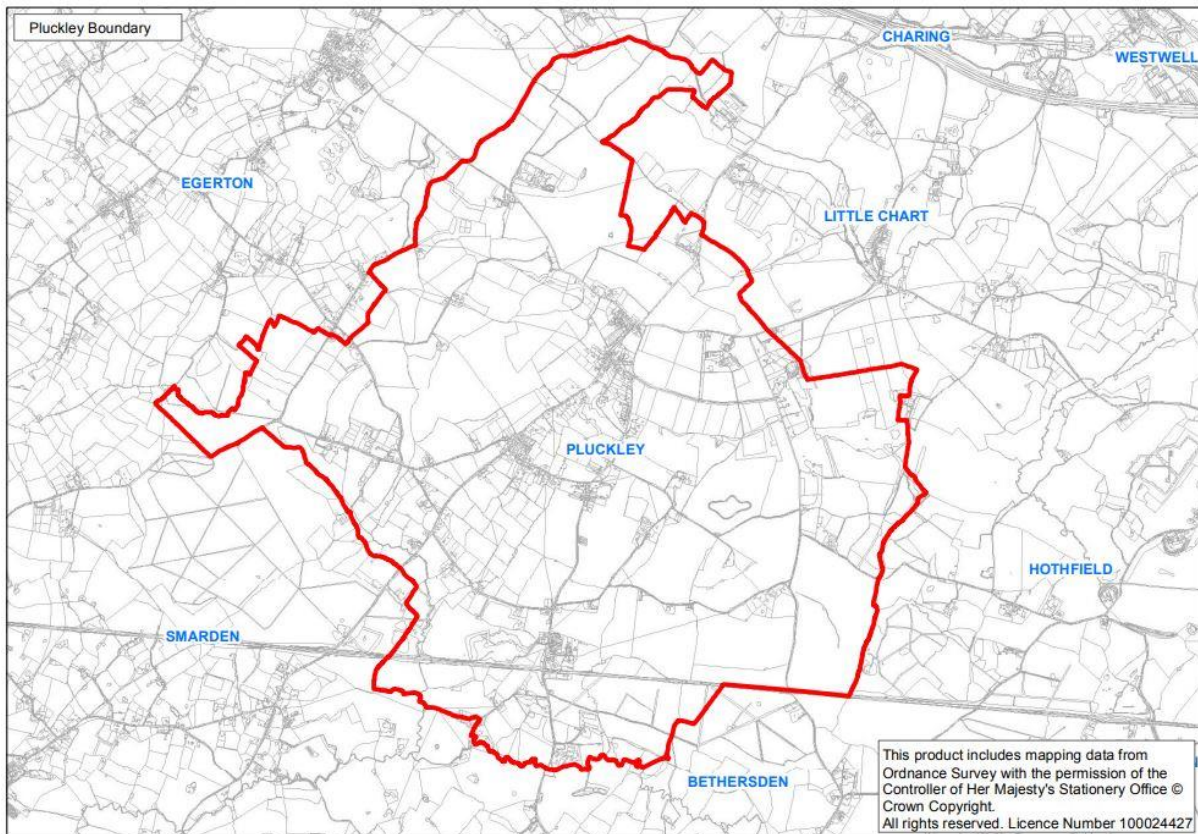
Introduction

A referendum on the Pluckley Parish Neighbourhood Plan Review 2016 to 2031 will be held on Thursday 2nd May 2024. The referendum will be conducted based on procedures which are similar to local government elections.

The question to be asked in the referendum is:

“Do you want Ashford Borough Council to use the Neighbourhood Plan for Pluckley Parish to help it decide planning applications in the neighbourhood area?”

The neighbourhood area is the entire parish of Pluckley and is marked on the map below:



Can I vote?

You can vote in the referendum if you live in Pluckley Parish and:

- You are registered to vote in local council elections; and
- You are 18 years of age or over on Thursday 2nd May 2024

You have to be registered to vote by Tuesday 16th April 2024 to vote in the referendum. You can check if you are registered to vote by calling our Helpline on 01233 330402.

Referendum expenses

The Referendum expenses limit that will apply in relation to the Referendum is £2,415.04. The number of persons entitled to vote in the Referendum by reference to which the limit has been calculated is 899.