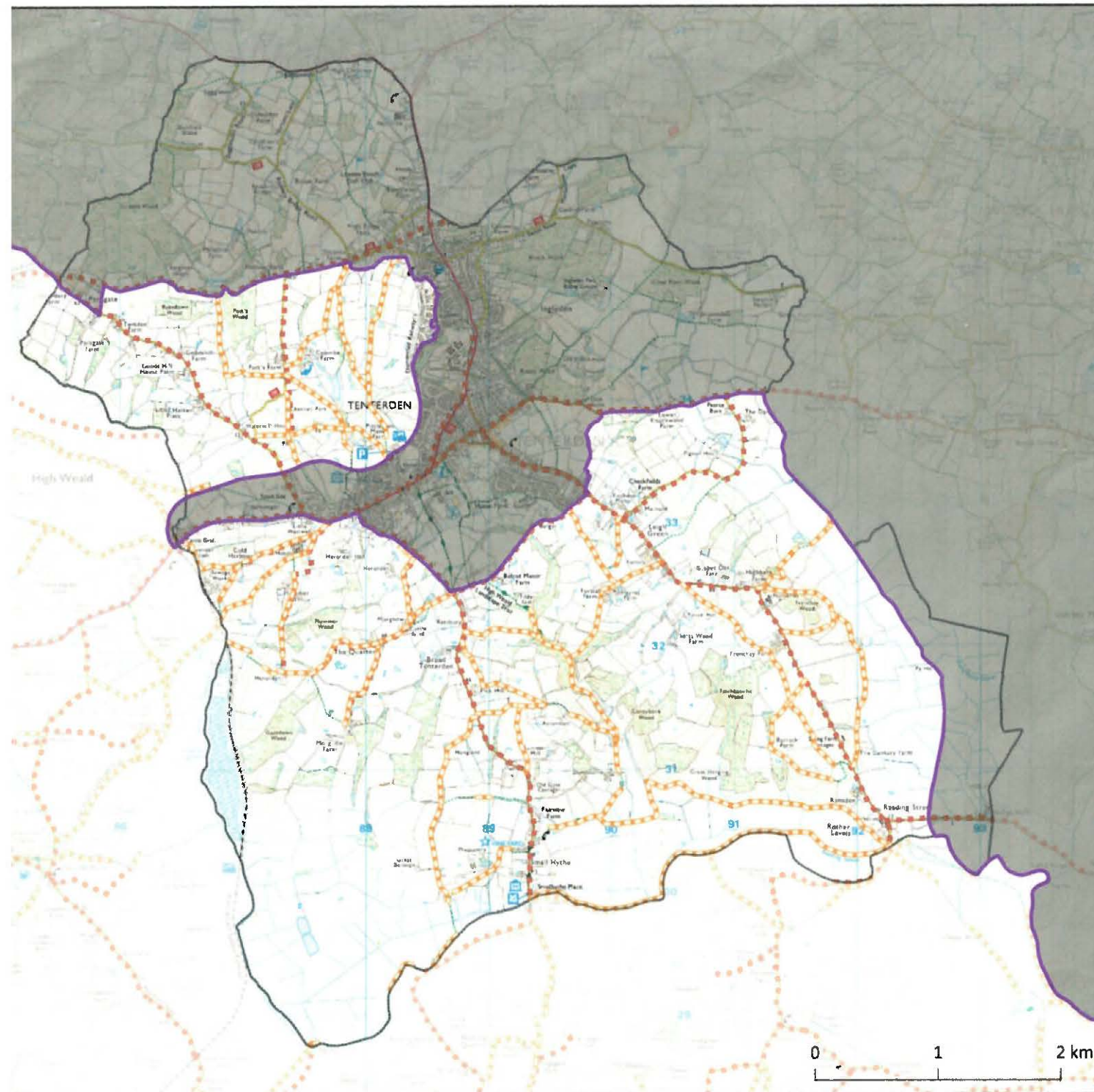


# High Weald AONB

## Landscape Character:

### Historic routeways

# Tenterden Parish



**Key**

- Historic routeways - roads (R1)
- Historic routeways - PROW (R1)
- Area of parish outside the High Weald AONB for which data is not displayed or not available (NB: only applicable where parishes straddle the AONB boundary)
- High Weald AONB boundary

**Summary Character Description:**  
The High Weald AONB is characterised by ancient routeways (now roads, tracks and paths) in the form of ridge-top roads and a dense system of radiating droveways. Ancient routeways are often narrow, deeply sunken, and edged with trees, hedges, wildflower-rich verges and boundary banks.

**Management Plan Objectives**  
*R1 Objective: To maintain the historic pattern and features of routeways.*  
*R2 Objective: To enhance the ecological function of routeways.*

For further info please refer to the High Weald AONB Management Plan, which may be downloaded from our website (see address below).

Researched and produced by the High Weald AONB Unit

T: 01424 723011  
E: [info@highweald.org](mailto:info@highweald.org)  
W: [www.highweald.org](http://www.highweald.org)

